

OPTIONS**Flow Rate**

0.35 gpm (1.3 Lpm) (0.35GPM)

0.5 gpm (1.9 Lpm) (0.5GPM)

Mixer

Back-Check Tee (TEE)

Below Deck Manual Mixing Valve (BDM)

NOTESFor product line drawings, [view model-specific spec sheets](#).

All information contained within this document subject to change without notice.

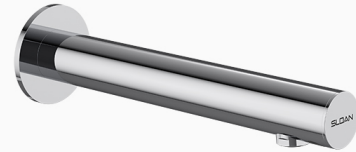
[Find a matching soap dispenser](#) for this faucet.[Find a compatible sink](#) for this faucet.

Image for a standard SF-2800 shown

DESCRIPTION

Sloan® Hardwired-Powered Wall-Mounted Wall Body Faucet

FEATURES

Commercial Grade, ADA Compliant, Electronic, Sensor-Activated, Brass Wall-Mounted Hand Washing Faucet with the following features:

- Adjustable Infrared Sensor Range
- 36" (914 mm) Long Sensor Cable
- 24" (610 mm) Long Flex Hose
- Filtered Solenoid Valve with serviceable Strainer Filter
- Includes Four (4) AA-size Batteries
- Includes appropriate Mounting Hardware
- 1 Year limited warranty

DOWNLOADS

- [SF Series Installation Instructions](#)
- [SF Series \(FR\) Installation Instructions](#)
- [SF Series \(SP\) Installation Instructions](#)
- [SFP 35-A Installation Instructions](#)
- [SF 2800/2850 Repair and Maintenance Guide](#)
- [Additional Downloads](#)

Sloan 10500 Seymour Ave, Franklin Park, IL 60131

Phone: 800.982.5839 • Fax: 800.447.8329 • sloan.com