



SLOAN PARK™

Sloan is the Chicago Cubs
Official Water Efficiency Partner

Join us in conserving our planet's most precious resource.

Visit sloanvalve.com/water-efficiency or call 800.982.5839 for
detailed information on all of our water efficiency products.



Sloan®, Water Connects Us®, Royal®, Jetrinse™, BASYS®, Optima®, Solis®, AER-DEC™ and Act-O-Matic™ are trademarks of Sloan Valve Company. Sloan Park™ is a trademark of Major League Baseball. WaterSense® is a trademark of the Environmental Protection Agency. CALGreen® is a trademark of the California Building Standards Commission. USGBC®, LEED® and the related logos are trademarks owned by the U.S. Green Building Council® and are used with permission.

PUTTING WATER
EFFICIENCY TO WORK

TRANSFORMING THE COMMERCIAL WASHROOM

Sloan helps customers worldwide to meet the water and energy challenges of growing businesses, municipalities and communities. We empower people to create water management systems that connect us all more responsibly.

Water Connects Us® is more than just Sloan's tagline. **Sloan understands the dynamic relationship between the world's water management systems and its water ecosystems.** Sloan has partnered with healthcare facilities, restaurants, hotels, schools, office buildings and institutions around the world to save millions of gallons of water with low-flow, waterfree and reclaimed water technology.

Since innovating the Royal® flushometer over 100 years ago, **Sloan has led the industry in water efficiency.** Sloan's products offer water conservation without sacrifice. Our global team of engineers have developed technologies that improve water-efficiency without compromising design, quality, affordability or performance.

WATER IS OUR MOST PRECIOUS RESOURCE



In fact, **less than 1% of the world's freshwater supply** is accessible for all of humanity's needs.



OUR COMMITMENT TO WATER CONSERVATION

Sloan has partnered with **EPA WaterSense® program, USGBC®, the Alliance for Water Efficiency, IAPMO, Milwaukee Water Council, The California Urban Water Conservation Council, ASPE,** and others to advance water efficiency efforts. **Sloan is also the first manufacturer to receive IAPMO Green Certification for Commercial Plumbing Systems.**

Sloan's complete line of **innovative plumbing solutions** can be used to help achieve water efficiency goals as well as gaining USGBC LEED® v4 points and/or complying with CALGreen® and other building codes.

Sloan is committed to global water conservation.

We connect communities of engineers, architects, designers, building managers and owners to high-efficient products and systems to promote healthier water ecosystems for generations to come.

MEET LEED'S 20% BASELINE REDUCTIONS

Many of Sloan's products not only help you meet **LEED's 20% baseline reductions**, but can also help you **achieve extra points** as outlined in LEED v4 WE credit 2.

FLUSHOMETERS AND RETROFIT PRODUCTS

PIONEERING WATER EFFICIENCY

People in the developing world exist on less than 3 gallons of water per day; most Americans routinely use that amount in a single flush. Fortunately, from our manual to sensor flushometers, Sloan delivers a vast array of efficient options. Smarter and more efficient water use is a choice that's easier to make than ever before.

20%
LESS WATER

1.28 GPF CLOSET FLUSHOMETER

1.28 gpf systems use **20% less water** than 1.6 gpf.

0.125 GPF URINAL FLUSHOMETER

0.125 gpf systems use **88% less water** than 1.0 gpf.



88%
LESS

500,000
GALLONS

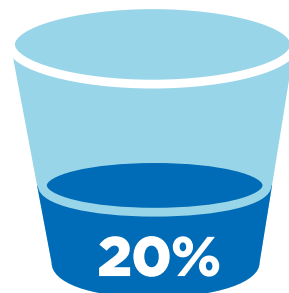


DUAL FLUSH 1.6/1.1 GPF CLOSET FLUSHOMETER

Dual Flush flushometers help Yale University **save 500,000 gallons** of potable water annually.

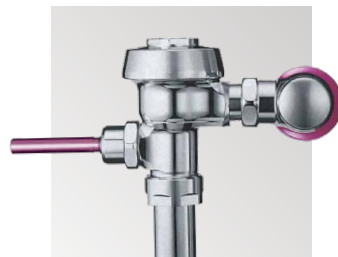
RETROFIT FLUSHOMETERS

Easy to install, Sloan Retrofit products can **save 20% or more of water usage** as well as time and energy for existing washrooms.



RECLAIMED WATER FLUSHOMETER

The U.S. Department of Energy estimates that **commercial buildings use 17% of potable water**. Because toilets and faucets account for most of the water used in commercial washrooms, Sloan's **revolutionary reclaimed water flushometer** paves the way to reaching sustainable goals.



TOILET AND URINAL SYSTEMS AND FIXTURES INNOVATION TO CHANGE THE WORLD

Over one billion gallons of water are wasted in the U.S. every year because of inefficient toilets. Sloan's high efficiency fixtures are designed for optimal performance with Sloan flushometers, and together, these systems provide opportunities to conserve an enormous volume of water over time.

HIGH-EFFICIENCY TOILET (HET) SYSTEMS

High efficiency toilet systems with 1.1 gpf **save 31% more water** than a 1.6 gpf toilet.



MAXIMIZE LEED CREDIT

HIGH-EFFICIENCY URINAL (HEU) SYSTEMS

Sloan 0.125 gpf urinals **help maximize LEED credit**.



LEED PLATINUM CERTIFICATION

WATERFREE URINALS

Waterfree urinals & Solis® solar powered faucets helped **USGBC's Headquarters attain 40% water reductions** and **achieve LEED® 2009 Platinum certification**.

Waterfree urinals provide **100% water savings** while reducing maintenance and repair costs.



INTEGRATE + ELIMINATE

HYBRID URINALS

The Hybrid Urinal with Jetrinse™ Solution Technology **eliminates the water flush** and **integrates an automatic drain line purge**.



USGBC®'S BASELINE FOR WATER CONSUMPTION



WATER
CLOSETS

1.6 gpf

URINALS

1.0 gpf

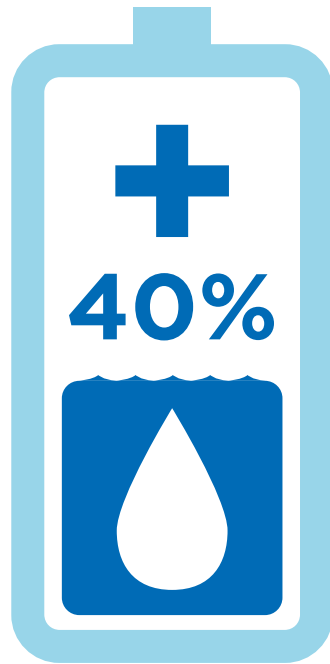
FAUCETS

BETTER EFFICIENCY, BETTER HYGIENE

Sloan pioneered the automatic sensor faucet and offers more styles, designs and options than any other manufacturer. Our faucets save water, increase hygiene and beautifully enhance restroom image.

BATTERY & SOLAR POWERED

Battery powered and other sensor faucets provide **water usage savings of up to 40%.**



BASYS®

Sleek and efficient, Basys faucets **save 60% of water** usage compared to other faucets.



60%
LESS WATER

OPTIMA®

AC powered and other electronic faucets are **touch free** and use as little as **0.18 gpc***.



SINK SYSTEMS

SUSTAINABLE DESIGN

From saving water to reducing energy and even eliminating the need for paper towels, these Sloan products are good for the environment, good for the user and good for business.

AER-DEC™ INTEGRATED SINK

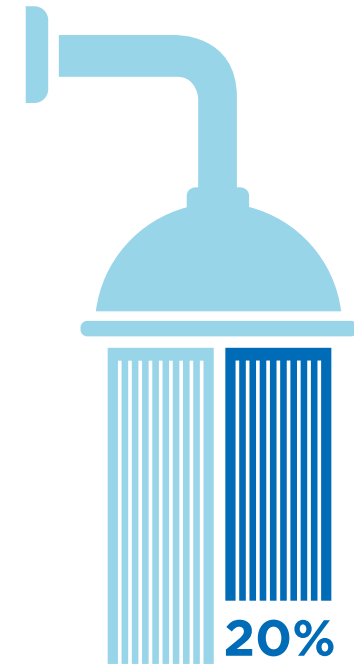
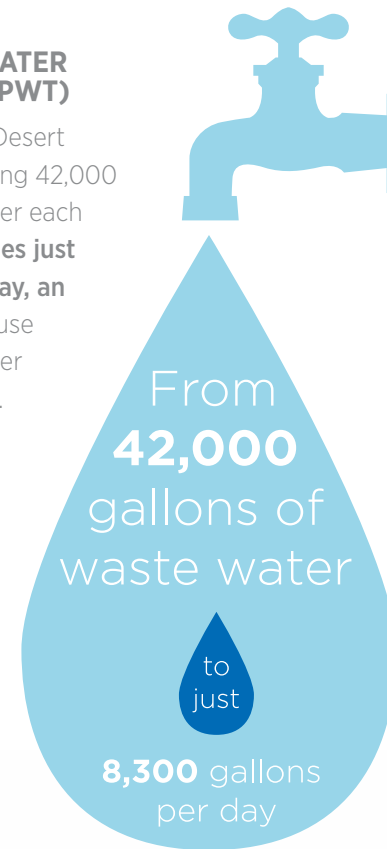
Adjustable flow rates ranging from 1.5 gpm to 0.5 gpm can **help you save up to 67% more water.**

SAVE
67%



PROGRAMMED WATER TECHNOLOGIES (PWT)

The Corcoran/High Desert Prison was discharging 42,000 gallons of waste water each day, but **now averages just 8,300 gallons per day, an 80% decrease** because of Programmed Water Technologies (PWT).



SHOWER HEAD

The Act-O-Matic™ 2.0 gpm delivers **proven Sloan performance, quality and durability** and reduces water usage by up to 20% over 2.5 gpm.



USGBC®'S BASELINE FOR WATER CONSUMPTION



SHOWER HEADS

2.5 gpm

PUBLIC FAUCETS

0.5 gpm