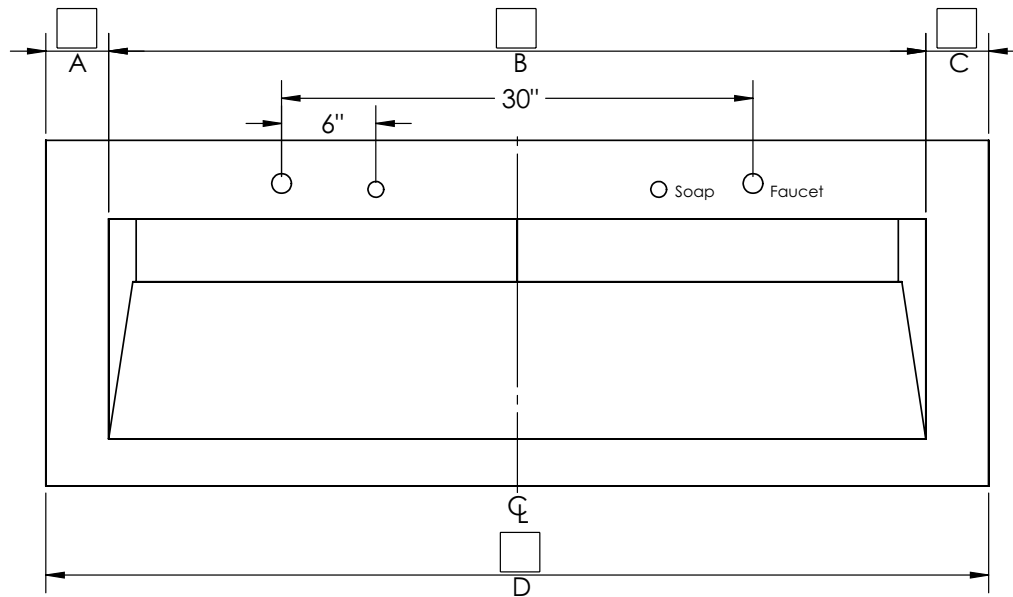
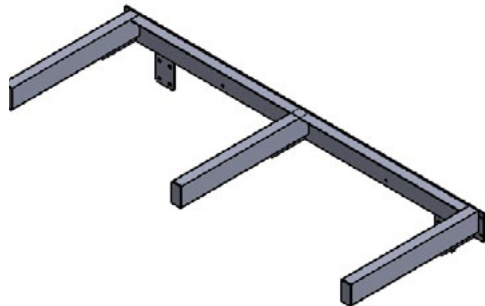


DESIGNER SERIES GRADIENT DSG-82000

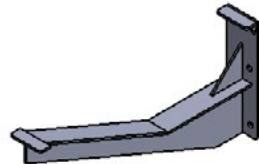
Sink Location
Alcove



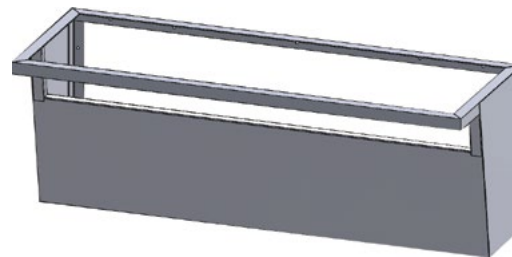
Mounting Option



Angle Brackets



Enclosure



No Mounting Options
(provided by others)

LOCATION/SIZE NOTES

Standard Size
Custom Size

| Dimensions | |
|------------|--------|
| Standard | Custom |
| 4" | |
| 52" | |
| 4" | |
| 60" | |

A
+
B
+
C
=
D

*A+B+C=D

Standard Size
Custom Size

| Standard Sizes | Custom |
|----------------|--------|
| Soap Hole | 1" |
| Faucet Hole | 1 1/4" |
| Apron | 5" |

DESIGNERS SERIES GRADIENT DSG-82000

PROJECT INFORMATION

| | | | |
|--------------------|------------------|----------------------|----------------------|
| Architect/Designer | Project Name | Email | Phone |
| State | Location Details | Sloan Representative | Cloud for Sales ID # |

SINK INFORMATION

| | | |
|---|---------------------------------|---|
| Sink Quantity | Faucet Quantity (per sink) | Soap Dispenser Quantity (per sink) |
| Sloan Faucet Model Type | Sloan Faucet Code | Sloan Soap Dispenser Model |
| LED | Faucet Hole Size (If Non Sloan) | Soap Dispenser Hole Size (If Non Sloan) |
| | Laminate Color | Enclosure Options |
| Corian® Color | Bag Hooks | Notes |
| Zodiac® Color | Edge Type | |
| Silestone® Color** | Drawing Requested? | |

If alternative color option please specify in notes box

| | | |
|--------------------|-----------------|-------------------|
| Approval Signature | Approvers Title | Date (mm/dd/yyyy) |
|--------------------|-----------------|-------------------|

INTERNAL USE ONLY

Internal Sloan Representative

Shipping Lead Time*

Compliance Notes

Quote Number

List Price \$ (Good for 60 Days)

Notes

*Lead Time Starts upon Sloan's receipt of order - Note: Changes to Drawings after sign off may extend lead time

**Any Corian or Zodiac sinks longer than 120 inches will need to be seamed on site, any Silestone sinks over 119.5 inches will need to be seamed on site. Quartz materials that are seamed will have a visible seam.