

Tailpiece

TAILPIECES



H-551-A

The tailpiece is the connection between the valve body and the control stop. Sloan adjustable and ground joint tailpieces are threaded into the valve body at the factory. Sloan tailpieces are available in a variety of lengths to accommodate installation rough-in errors and unique installation requirements.

Sloan flushometer brands feature three types of tailpiece connections:



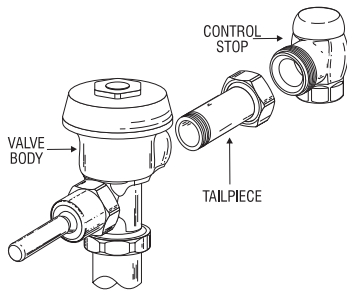
H-551 ADJUSTABLE TAILPIECE



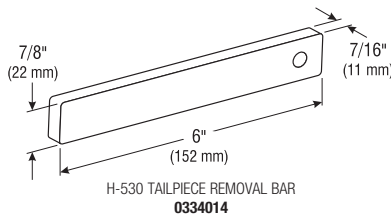
H-5 GROUND JOINT TAILPIECE



H-130-A ADJUSTABLE GROUND JOINT TAILPIECE



TAILPIECE REPLACEMENT



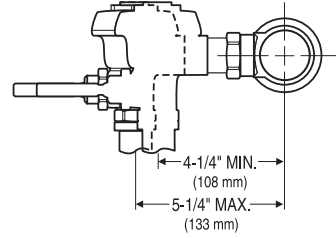
H-530 TAILPIECE REMOVAL BAR
0334014

Sloan adjustable and ground joint tailpieces are assembled into the valve body using a pipe thread. Significant force is used to drive the tailpiece into the valve body. As such, removal of the old tailpiece may be difficult.

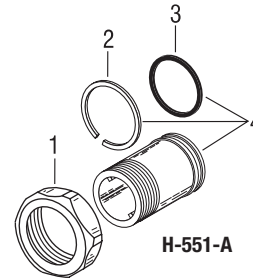
For replacement, we recommend using the **H-530 tailpiece removal bar** (Code No. **0334014**). Remove the flushometer cover and interior parts. Secure the tailpiece removal bar vertically in a vice. Place the flushometer tailpiece over the bar. The cast lugs inside the tailpiece will catch on the bar. Insert a length of 3/4" pipe into the barrel of the valve body. Unscrew tailpiece from valve body.

Assemble the new tailpiece into the valve body in the reverse manner. Use teflon tape (or pipe sealant) on tailpiece pipe threads. Ensure that both the coupling and the locking ring (adjustable tailpiece only) are on the tailpiece before tightening the assembly. Do NOT use sealant on the first few threads of the tailpiece.

H-551-A ADJUSTABLE TAILPIECE CONNECTION



The majority of flushometers supplied by Sloan since 1964 feature the H-551-A adjustable tailpiece. The valve tailpiece connects to the control stop with a sliding O-ring seal. The H-551-A adjustable tailpiece standard length is 2-1/16" (54 mm). This is designed for a standard flushometer installation in which the distance between the centerline of the valve and the centerline of the water supply inlet is 4-3/4" (121 mm). The adjustable tailpiece allows for a variance of ±1/2" (13 mm) from this nominal dimension.



H-551-A

Item

Item No.	Code No.	Part No.	Description
1.	0308676	H-550	Coupling CP
	0308690	H-550	Coupling RB
2.	5308381	H-552	Locking Ring – 12 per package
3.	5308696	H-553	O-Ring – 24 per package
4.	0308801	H-551-A	2-1/16" (53 mm) Tailpiece Assembly† CP
	0308802	H-551-A	2-1/16" (53 mm) Tailpiece Assembly† RB
	0308803	H-551-A	3-1/16" (78 mm) Tailpiece Assembly† CP
	0308805	H-551-A	4-1/16" (103 mm) Tailpiece Assembly† CP
	0308807	H-551-A	5-1/16" (129 mm) Tailpiece Assembly† CP
	0308809	H-551-A	6-1/16" (154 mm) Tailpiece Assembly† CP

† Each tailpiece assembly includes an H-553 O-Ring and an H-552 locking ring.

Abbreviations: CP: chrome plated; RB: rough brass

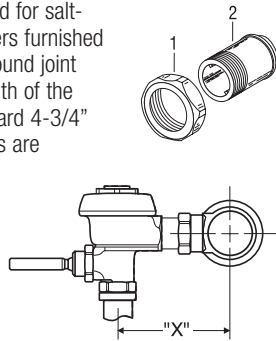
Sloan Valve Company can also provide products not shown in our current catalog. For our special finishes, consult factory for part numbers.

Tailpiece

NH-5 GROUND JOINT TAILPIECE CONNECTION

Older valves (prior to 1964), valves furnished for salt-water installations, and all Sloan flushometers furnished with straight stops use a metal-to-metal ground joint (G.J) tailpiece connection. The standard length of the H-5 tailpiece is 1-3/4" (44 mm) for a standard 4-3/4" (121 mm) rough-in dimension; other lengths are available in 1/4" (6 mm) increments.

The ground joint tailpiece connection cannot be adjusted in the field, so rough-in must be exact. Replacement NH-5 tailpieces can compensate for rough-in errors.



CHROME PLATED COMPONENTS

Item No.	Code No.	Description
1.	0308063	H-6 Coupling
2.	See below	NH-5 Ground Joint Tailpiece
	"X"	Tailpiece Length
	0308019	4-1/4" (108 mm) 1-1/4" (32 mm)
	0308023	4-1/2" (114 mm) 1-1/2" (38 mm)
	0308026	4-3/4" (121 mm) 1-3/4" (44 mm)
	0308030	5" (127 mm) 2" (51 mm)
	0308031	5-1/4" (133 mm) 2-1/4" (57 mm)
	0308033	5-1/2" (140 mm) 2-1/2" (64 mm)
	0308034	5-3/4" (146 mm) 2-3/4" (70 mm)
	0308035	6" (152 mm) 3" (76 mm)
	0308037	6-1/4" (159 mm) 3-1/4" (83 mm)
	0308038	6-1/2" (165 mm) 3-1/2" (89 mm)
	0308040	6-3/4" (171 mm) 3-3/4" (95 mm)
	0308041	7" (178 mm) 4" (102 mm)
	0308042	7-1/4" (184 mm) 4-1/4" (108 mm)
	0308043	7-1/2" (191 mm) 4-1/2" (114 mm)
	0308044	7-3/4" (197 mm) 4-3/4" (121 mm)
	0308045	8" (203 mm) 5" (127 mm)
	0308047	8-1/2" (216 mm) 5-1/2" (140 mm)
	0308050	9" (229 mm) 6" (152 mm)

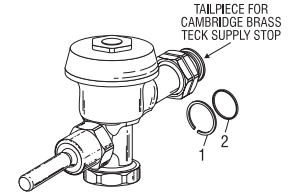
ROUGH BRASS COMPONENTS

1.	0308063	H-6 Coupling
2.	See below	NH-5 Ground Joint Tailpiece
	"X"	Tailpiece Length
	0308028	4-3/4" (121 mm) 1-3/4" (44 mm)

NOTE: "X" indicates the distance between the centerline of valve and the centerline of the water supply. Ground joint couplings are notched for identification.

"XDT" FLUSHOMETER FOR CANADIAN TECK VALVES

Sloan can provide a flushometer with a tailpiece that can connect to a Cambridge Brass Teck (Wal-teck) supply stop. This special valve assembly is specified as our "-XDT" variation. This tailpiece cannot be replaced in the field.

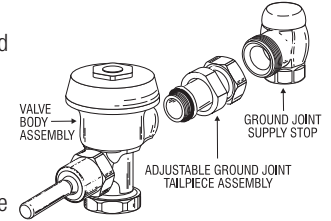


Item No.	Code No.	Part No.	Description
1.	5308934	H-501	Locking Ring – 6 per package
2.	5308958	H-589	O-Ring – 6 per package

H-130-A ADJUSTABLE GROUND JOINT TAILPIECE CONNECTION

To accommodate adjustability in a ground joint connection, Sloan developed the H-130-A adjustable ground joint tailpiece connection. This is commonly supplied on valves used in retrofit applications where an existing ground joint supply stop (made by either Sloan or another manufacturer) is utilized. The H-130-A tailpiece is supplied as our "-XD" variation and requires a special valve body.

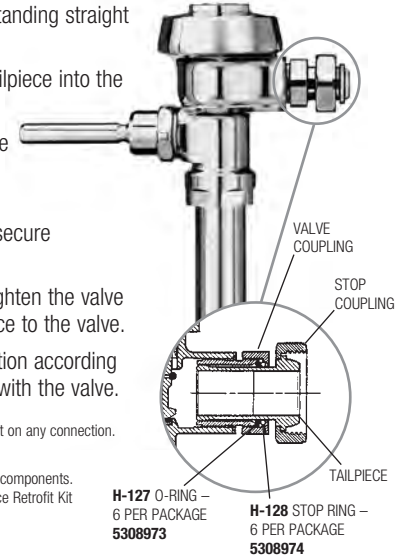
It **cannot** be used to replace an H-551-A or an H-5 tailpiece.



TO INSTALL THE ADJUSTABLE GROUND JOINT TAILPIECE:

NOTE: flushometer should be standing straight and not leaning to either side.

- Screw threaded end of the tailpiece into the flushometer body.
- Continue turning until tailpiece matches up to the end of the existing supply stop.
- Tighten the stop coupling to secure the valve to the supply stop.
- Using a flat-jawed wrench, tighten the valve coupling to secure the tailpiece to the valve.
- Continue flushometer installation according to the instructions packaged with the valve.

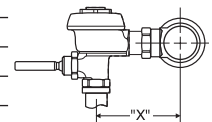


NOTE: DO NOT use pipe dope or thread sealant on any connection. Lubricate O-ring ONLY with water!

O-ring and stop ring are available as individual components. All other items are sold only in H-130-A tailpiece Retrofit Kit (see table below).

TAILPIECE RETROFIT KIT (WHEN USED WITH GROUND JOINT SUPPLY STOP)

Code No.	"X" †	Part No.
0308976	4-3/4" (121 mm)	H-130-A-1 †
0308983	5-3/4" (146 mm)	H-130-A-2
0308984	6-3/4" (171 mm)	H-130-A-3
0308979	7-3/4" (197 mm)	H-130-A-4



† When used with a Sloan ground joint supply stop, the tailpiece can be adjusted to a shorter or longer length (± 1/2" or 12 mm from the "X" dimension shown). When used with Delany ground joint supply stop, the tailpiece can be adjusted up to 1" (25 mm) longer from the "X" dimension shown.

‡ Unless otherwise specified, the H-130-A-1 tailpiece is furnished as standard with all "-XD" variation flushometer valves.