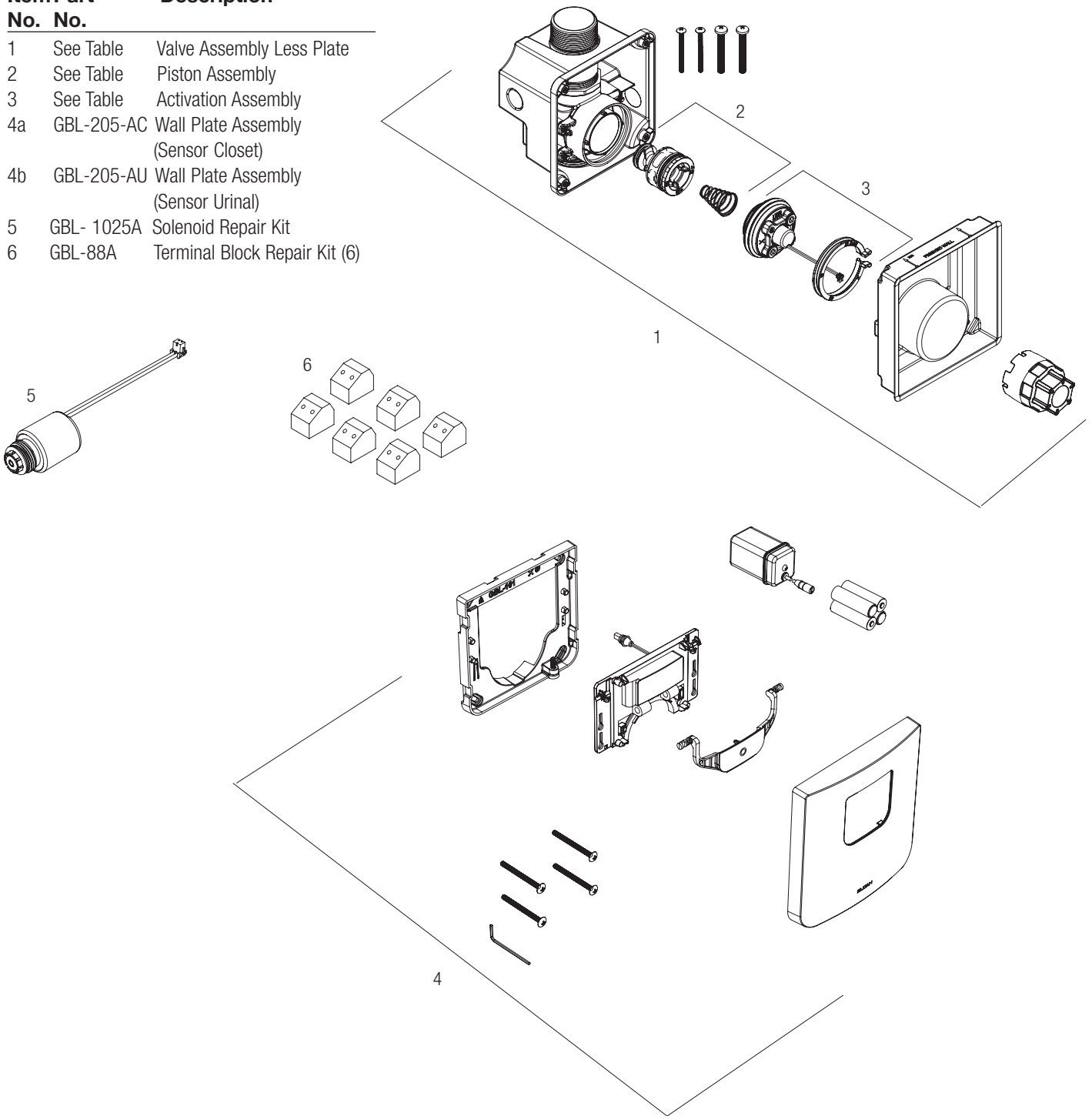


**TruFlush Hardwired/Battery
Flushometers**

**Not available in
USA or Canada**

Item No.	Part No.	Description
1	See Table	Valve Assembly Less Plate
2	See Table	Piston Assembly
3	See Table	Activation Assembly
4a	GBL-205-AC	Wall Plate Assembly (Sensor Closet)
4b	GBL-205-AU	Wall Plate Assembly (Sensor Urinal)
5	GBL-1025A	Solenoid Repair Kit
6	GBL-88A	Terminal Block Repair Kit (6)



Not available in USA or Canada

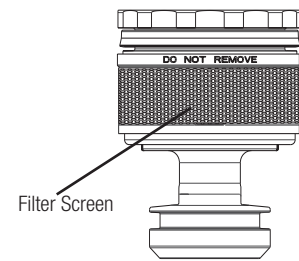
TruFlush Hardwired/Battery Flushometers

VALVE ASSEMBLY SELECTION GUIDE

Code No.	Part No.	Description
3400111	TRF 8156-1.6 LP (Washdown)	Sensor Valve Assembly 1.6 gpf/6.0 Lpf (Washdown)
3400105	TRF 8156-1.6 LP	Sensor Valve Assembly 1.6 gpf/6.0 Lpf
3400106	TRF 8156-1.28 LP	Sensor Valve Assembly 1.28 gpf/4.8 Lpf
3400107	TRF 8196-0.5 LP	Sensor Valve Assembly 0.5 gpf/1.9 Lpf
3400108	TRF 8196-0.25 LP	Sensor Valve Assembly 0.25 gpf/1.0 Lpf

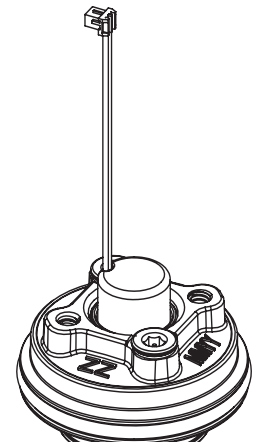
PISTON PARTS LIST SELECTION GUIDE

Code No.	Part No.	Description	Piston Color*
3340024	GBL-1024-A	1.6 gpf/6.0 Lpf (wash down) TruFlush closet piston assembly	Orange
3340005	GBL-1005-A	1.6 gpf/6.0 Lpf TruFlush closet piston assembly	Green
3340006	GBL-1006-A	1.28 gpf/4.8 Lpf TruFlush closet piston assembly	Purple
3340007	GBL-1007-A	0.5 gpf/1.9 Lpf TruFlush urinal piston assembly	Red
3340008	GBL-1008-A	0.25 gpf/1.0 Lpf TruFlush urinal piston assembly	Burgandy



ACTIVATION ASSEMBLY SELECTION GUIDE

Code No.	Part No.	Description	Aspirator Retainer Color*
3340026	GBL-1026-A	1.6 gpf/6.0 Lpf (wash down) closet activation assembly	Orange
3340000	GBL-1000-A	1.6 gpf/6.0 Lpf closet activation assembly	Green
3340001	GBL-1001-A	1.28 gpf/4.8 Lpf closet activation assembly	Purple
3340002	GBL-1002-A	0.5 gpf/1.9 Lpf urinal activation assembly	Red
3340003	GBL-1003-A	0.25 gpf/1.0 Lpf urinal activation assembly	Burgundy



ASPIRATOR ASSEMBLY SELECTION GUIDE

Code No.	Part No.	Description	Aspirator Retainer Color*
3340032	GBL-1032-A	1.6 gpf/6.0 Lpf (wash down) closet aspirator assembly (6PK)	Orange
3340028	GBL-1028-A	1.6 gpf/6.0 Lpf closet aspirator assembly (6PK)	Green
3340030	GBL-1030-A	1.28 gpf/4.8 Lpf closet aspirator assembly (6PK)	Purple
3340031	GBL-1031-A	0.5 gpf/1.9 Lpf urinal aspirator assembly (6PK)	Red
3340029	GBL-1029-A	0.25 gpf/1.0 Lpf urinal aspirator assembly (6PK)	Burgundy

TruFlush Hardwired/Battery Flushometers

TROUBLESHOOTING

A. Sensor Flashes Continuously Only When User Steps Within Range.

- i. Unit in Start-Up mode; no problem. This feature is active for the first ten (10) minutes of operation.

B. Valve Does Not Flush; Sensor Not Picking Up User.

- i. Range too short; increase the range (See Section 9).

C. Valve Does Not Flush; Sensor Picking Up Opposite Wall or Surface, or Only Flushes When Someone Walks By. Red Light Flashes Continuously for First 10 Minutes Even with No One in Front of the Sensor.

- i. Range too long; shorten range (See Section 9).

D. Valve Does Not Flush Even After Adjustment.

- i. Ensure water supply to valve is turned on.
- ii. Activation Assembly sleeve is in closed position. Turn counterclockwise to open water flow.
- iii. Batteries completely used up; replace batteries (See Section 10).
- iv. Problem with activation assembly; replace activation assembly (Section 1).
- v. Problem with Sensor Assembly; replace Sensor Assembly (See Section 3).

E. Red Light Blinks four (4) Times When User Steps Within Range (Battery Only).

- i. Batteries low; replace batteries (See Section 10).

F. Red Light Blinks four (4) Times When User Steps Within Range (Hardwire and Battery).

- i. Battery box not connected; connect battery box to sensor assembly (see section 10).
- ii. Batteries low; replace batteries (see section 10).

G. Valve Does Not Shut off.

- i. Metering bypass hole in piston is clogged. Remove the piston O-ring from groove and wash under running water. Replace piston if cleaning does not correct the problem (See Section 11).
- ii. Supply line water pressure has dropped and is not sufficient to close the valve. Close Activation Assembly until pressure is restored.
- iii. Piston is damaged. Replace with new proper gpf/Lpf piston.

H. Too much water to Fixture.

- i. Activation Assembly not adjusted properly. Readjust Activation Assembly (see section 6).
- ii. Piston is damaged. Replace with new proper gpf/Lpf piston
- iii. Wrong TruFlush model installed; i.e., 1.6 gpf. model installed on 1.0 or 1.5 gal. urinal fixture. Replace with proper TruFlush model per guide.

I. Not Enough Water to Fixture.

- i. Activation Assembly not adjusted properly. Readjust Activation Assembly by turning counterclockwise.
- ii. Wrong TruFlush model installed; i.e. 0.5 gpf. urinal installed on 1.6 gal. closet fixture. Replace with proper TruFlush model.
- iii. Water supply pressure is inadequate (low). increase the water supply pressure. Contact the fixture manufacturer for minimum water supply requirements of the fixture.

J. Chattering noise is heard during flush.

- i. Reduce flow pressure by turning Activation Assembly.