

IMPORTANT: INSTALL IN ACCORDANCE WITH APPLICABLE CODES AND REGULATIONS

1 Determining Whether Recessed Sweating is required

With wall finished and water closet installed, measure from finished wall to centerline of closet spud (spud). If the distance of finished wall to centerline of the spud is 3-5/16" or less (* but not less than less than 2-1/2"), then a 2-1/2" diameter hole shall be required around the centerline of the supply pipe to allow access for recessed sweating of the 1" NPT sweat solder adapter onto the copper pipe.

* Offset Adapter can only be used when distance from the finished wall to the spud centerline is 2-1/2" or greater; at 2-1/2", this will be a flush cut at the finished wall.

Determining which Wall Flange to use:

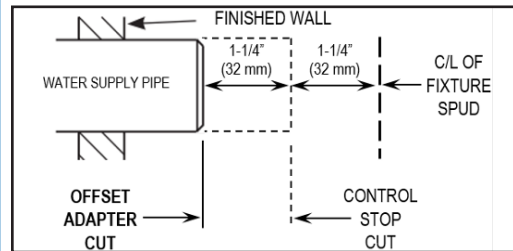
If the distance of finished wall to centerline of spud is 3-1/2" or less, use the Offset Adapter Wall Flange with prongs.

If the distance of finished wall to centerline of spud is 3-1/2" or greater, use supply casing tube and wall flange provided with flushometer.

2 Control Stop Measurement

Measurement for aligning Control Stop with Offset Adapter to flushometer/fixture spud centerline.

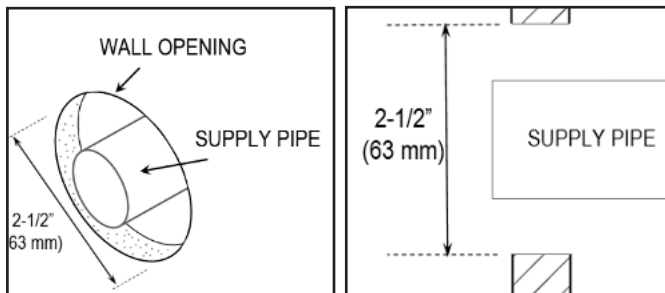
Measure from finished wall surface to centerline of fixture spud, then subtract 2-1/2" (1-1/4" measurement for control stop, and additional 1-1/4" for Offset Adapter), mark supply pipe with new measurement from finished wall and cut.



3 Centering hole opening

A 2-1/2" hole/opening centered around the water supply pipe is required when the horizontal distance from the finished wall to the spud centerline is 2-1/2" to 3-5/16" (to access sweating the recessed sweat adapter). A 2-1/2" hole saw or equivalent can be used to cut or mark the opening around the copper pipe.

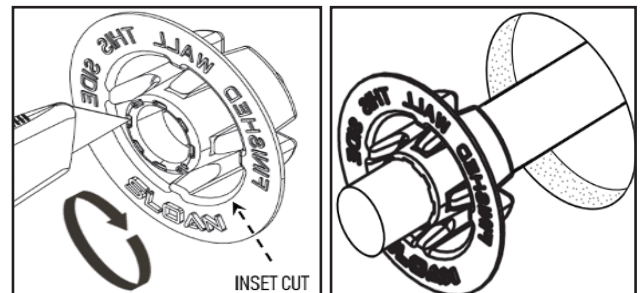
The finished wall opening (diameter) around the pipe cannot be larger than 2-1/2" centered around the pipe, otherwise the wall flange may not properly cover the opening.



4 Mudguard opening

Prior to sweating the 1" NPT adapter, the mudguard can be used to determine the opening around the pipe. For 1" standard copper supply line, cut the mudguard along the indents as shown in the figure, and slide the mud guard over the pipe to the finished wall. The back protrusion of the mudguard should slide inside the hole (the face flange can be cut off to the 2-1/2" diameter inset to finish around).

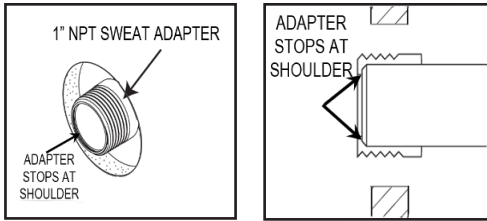
* The wall opening can be finished to a smaller diameter after sweating the adapter onto the pipe.



5 Sweat Solder Adapter

Slide sweat adapter all the way onto the pipe to the stop shoulder of the sweat adapter. Sweat the solder adapter to the supply pipe. Sweat adapter kit included with flushometer.

Take Precaution when using a flame to sweat solder at the wall opening.



6 Casing Tube

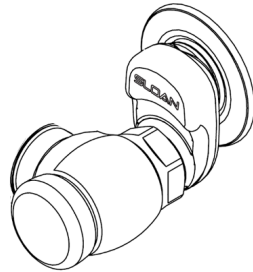
Trim casing tube to length and slide over copper pipe (provided in sweat solder adapter kit with flushometer). Slide predetermined wall flange (from Step 1) over casing tube, apply pipe sealant or pipe tape on sweat adapter threads, and then begin threading the Offset Adapter onto the sweat adapter fitting; be sure to align the Offset Wall Flange with prongs over the inlet of the Offset Adapter. **Using a smooth jaw wrench** and a protective barrier (e.g. mylar, cardboard, etc., to help prevent scratching the finish), grip the Offset Adapter along the sides and carefully tighten the adapter onto the pipe, finishing with SLOAN logo right side up.

Casing tube may not be visible after installing Offset Adapter, in some instances there may be a gap between the flange and Offset Adapter which will reveal the casing tube.

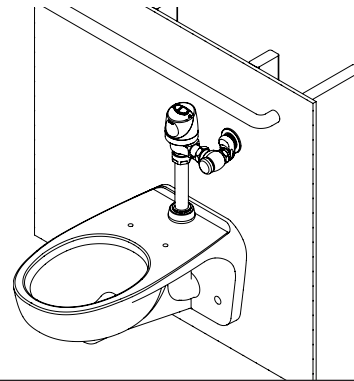


7 Applying Pipe Sealant

Apply pipe sealant or pipe tape on Offset Adapter threads, then begin threading control stop onto Offset Adapter. **Using one smooth jaw wrench** and a protective barrier (e.g. mylar, cardboard, etc., to help prevent scratching the finish), grip the Offset Adapter along the sides and carefully hold the adapter from turning, and using another smooth jaw wrench, tighten control stop onto Offset Adapter, finishing with the control stop orientation to the flushometer.

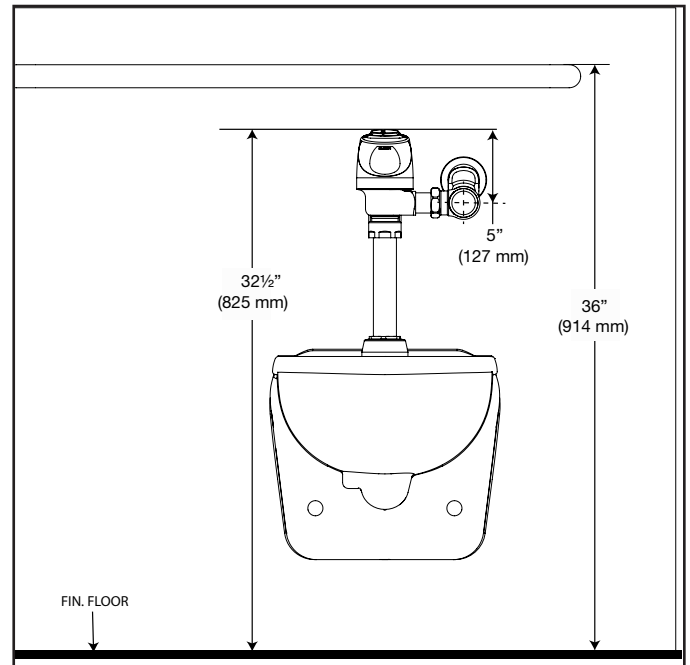
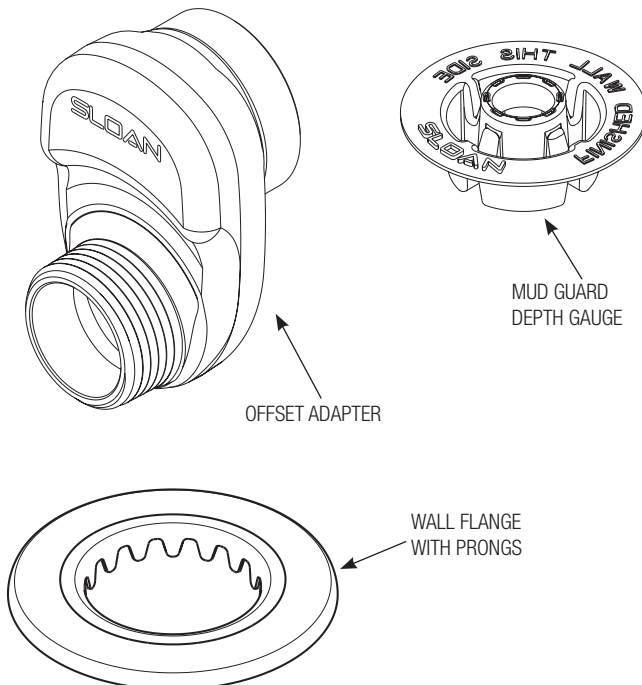


8 Continue with Installation of Flushometer



IN ACCORDANCE WITH ADA GUIDELINES (section 609.3): This offset adapter can help provide the 1-½" clearance below the grab bar required for ADA compliance.

Parts Breakdown



SLOAN VALVE COMPANY • 10500 SEYMOUR AVENUE • FRANKLIN PARK, IL 60131

Phone: 1-800-9-VALVE-9 or 1-847-671-4300 • Fax: 1-800-447-8329 or 1-847-671-4380 • www.sloan.com
 COPYRIGHT © 2020 SLOAN VALVE COMPANY Code:No: 08160006 – Rev.1 (11/20)