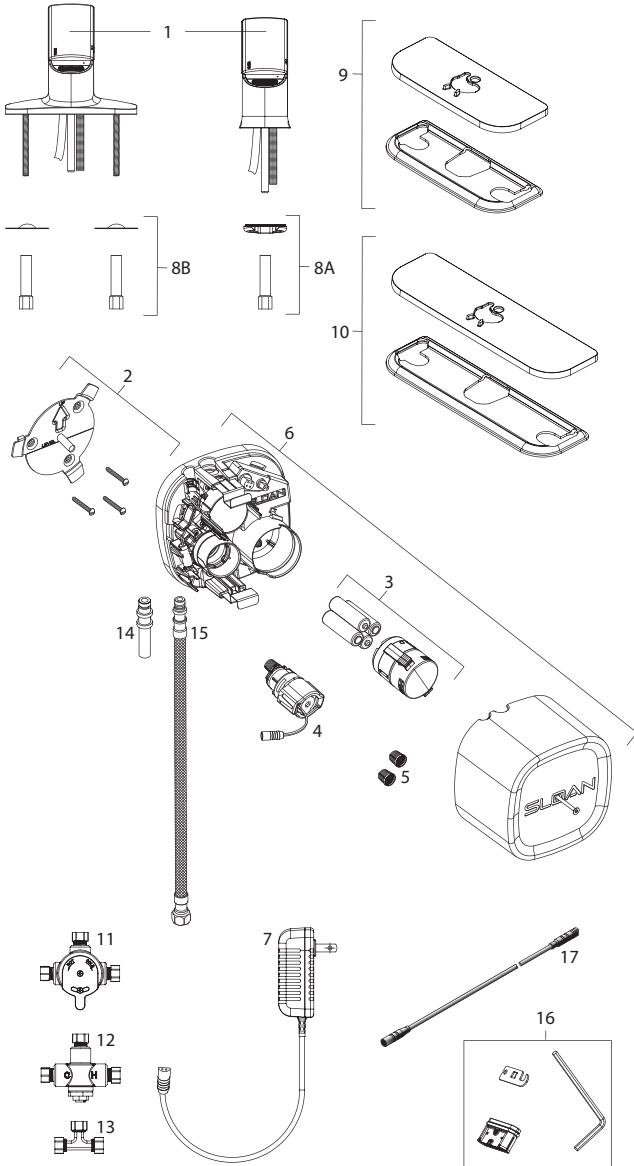


# BASYS® Faucet

## Capacitance Sensing Activated



### PARTS LIST—BASYS FAUCETS

Item No.	Code No.	Part No.	Description
1.	<b>0324002</b>	EFX-2	Standard Crown
2.	<b>0324036</b>	EFX-36	Control Module Mounting Kit
3.	<b>3324113</b>	EFX-8	Battery Pack
4.	<b>3324114</b>	EFX-13-A	Solenoid Valve Caddy 0.5 gpm (1.9 Lpm)
	<b>3324115</b>	EFX-14-A	Solenoid Valve Caddy 1.5 gpm (5.7 Lpm)
5.	<b>0324019</b>	EFX-19	Filter / Strainers
6.	<b>3324105</b>	EFX-1003-A	Control Module Assembly – 0.5 gpm (1.9 Lpm)
	<b>3324106</b>	EFX-1004-A	Control Module Assembly with Turbine – 0.5 gpm (1.9 Lpm)
	<b>3324107</b>	EFX-1005-A	Control Module Assembly – 1.5 gpm (5.7 Lpm)
	<b>3324108</b>	EFX-1006-A	Control Module Assembly with Turbine – 1.5 gpm (5.7 Lpm)
7.	<b>0324031</b>	EFX-31	120 VAC/6.75 VDC Plug-in Voltage Adapter
8A.	<b>0335000</b>	EAF-1	Faucet Spout Mounting Kit (Pedestal)
8B.	<b>0324021</b>	EFX-21-A	Faucet Spout Mounting Kit (Integrated Base)
9.	<b>3324100</b>	EFX-20-A	4-inch (102 mm) Centerset Base Plate Kit
10.	<b>3324101</b>	EFX-26-A	8-inch (203 mm) Centerset Base Plate Kit
11.	<b>3326009</b>	MIX-60-A	Below Deck Mechanical Mixing Valve
12.	<b>0326045</b>	MIX-135-A	Below Deck Thermostatic Mixing Valve
13.	<b>0324033</b>	ETF-617-A	Bak-Chek® Tee
14.	<b>0324034</b>	EFX-33	Inlet Hose Fitting
15.	<b>3324102</b>	EFX-34	Flexible Supply Hose 18" (45 mm)
16.	<b>3324104</b>	EFX-1002-A	0.5 gpm (1.9 Lpm) Multi-Lam Spray Insert, includes: insert, o-ring, insert removal tool, and hex key
	<b>3324103</b>	EFX-1001-A	1.5 gpm (5.7 Lpm) Aerated Stream Insert includes: insert, o-ring, insert removal tool, and hex key
	<b>3324102</b>	EFX-1000-A	1.5 gpm (5.7 Lpm) Laminar Stream Insert includes: insert, o-ring, insert removal tool, and hex key
17.	<b>0335024</b>	EAF-24-A	11-13/16" (300 mm) Extension Cable
	<b>0335025</b>	EFX-25-A	47-1/4" (1200 mm) Extension Cable
	<b>0335015</b>	EFX-17-A	126" (3200 mm) Extension Cable

NOTE: If changing flow rate, caddy and spray insert must be changed in conjunction. Manufactured by Sloan Valve Company under one or more of the following U.S. Patents: 7,690,623; 7,069,941; 6,619,320.  
 — in Item No. column = Not shown in illustration  
 — in Code No. and Part No. column = Not sold separately

**IMPORTANT**  
 Not for installation on a metal sink or deck (i.e. stainless steel or cast metal).

## BASYS® Faucet

### Capacitance Sensing Activated

#### TROUBLESHOOTING GUIDE

##### 1. RED LED in spout DOES NOT blink 2 seconds after battery installation.

- A. Battery placement incorrect or batteries have been discharged. Ensure batteries are installed properly. Check the orientation of each battery matches the positive (+) and negative (–) symbols shown on the battery compartment.

##### 2. Faucet DOES NOT function.

- A. Adhesive packaging label affixed over sensor eye. Remove adhesive label from sensor eye.

##### 3. Faucet delivers water in an uncontrolled manner.

- A. Clean sensor window; if problem persists, contact Sloan Technical Support).

##### 4. Faucet DOES NOT deliver any water when sensor is activated.

INDICATOR: Solenoid valve produces an audible “CLICK”.

- A. Water supply stop(s) closed. Open water supply stop(s).
- B. Strainer is clogged. Remove, clean, and reinstall strainer. Replace strainer (filter), if needed (refer to page 166).

INDICATOR: Solenoid valve DOES NOT produce an audible “CLICK”.

- A. Batteries low (battery-powered models). Replace batteries (refer to battery replacement on page 163).
- B. Power failure (hardwire models). Check power supply.

##### 5. Faucet delivers only a slow flow or dribble when sensor is activated.

- A. Water supply stop(s) are partially closed. Completely open water supply stop(s).

##### 6. Faucet DOES NOT stop delivering water or continues to drip after user is no longer detected.

- A. Clean sensor window; if problem persists, contact Sloan Technical Support.

##### 7. LED indicator blinks RED when faucet is in use.

- A. Batteries low (battery-powered models). Replace batteries (refer to battery replacement on page 166).

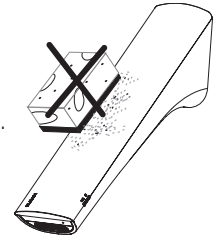
##### 8. The water temperature is too hot or too cold on a faucet connected to hot and cold water supply lines.

- A. Supply stops are not adjusted properly. Adjust supply stops.
- B. For models with integral side mixing valve—mixing valve is set improperly for the water temperature desired. Rotate mixing valve handle clockwise to decrease water temperature or counterclockwise to increase water temperature.
- C. Inadequate hot water supply. Adjust supply stops.

#### CARE AND CLEANING

**DO NOT USE** abrasive or chemical cleaners (including chlorine bleach) to clean faucets that may dull the luster and attack the chrome or special decorative finishes. Use **ONLY** mild soap and water, then wipe dry with clean cloth or towel.

While cleaning the bathroom sink, protect the faucet from any splattering of cleaner. Acids and cleaning fluids will discolor or remove chrome plating.

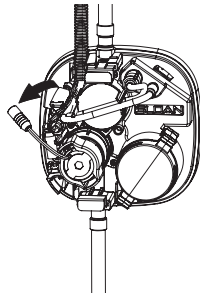


**When assistance is required, please contact Sloan Technical Support at: 1-888-SLOAN-14 (1-888-756-2614).**

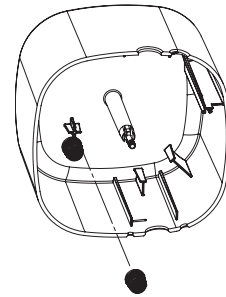
## **BASYS® Faucet** Capacitance Sensing Activated

### **REPLACE FILTER**

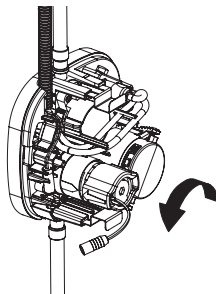
Disconnect solenoid wire from control module.



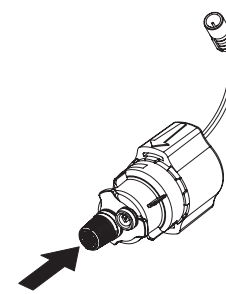
Remove new filter from control module cover.



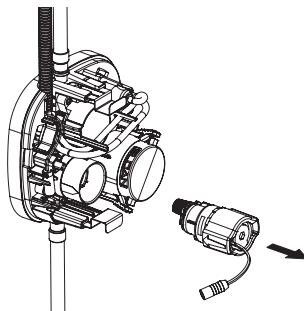
Turn solenoid caddy counterclockwise, lining up arrows on control module and solenoid caddy assembly.



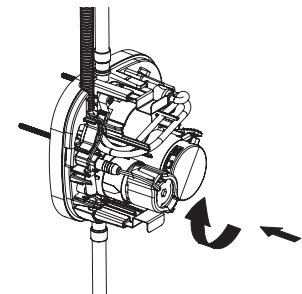
Snap new filter onto solenoid caddy assembly.



Remove solenoid caddy assembly from control module by pulling straight out.

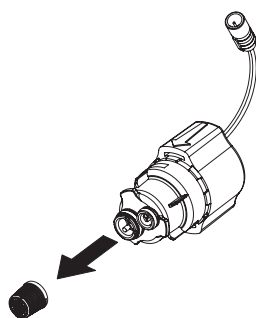


Insert solenoid caddy assembly into control module lining up arrows. Turn solenoid caddy assembly clockwise 45°.



Reconnect solenoid caddy wire to control module.

Remove filter from solenoid caddy assembly.

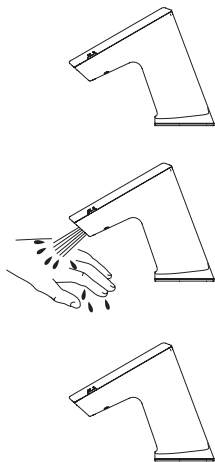


## BASYS® Faucet

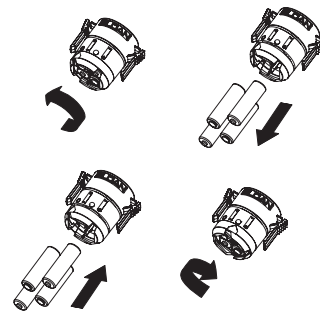
### Capacitance Sensing Activated

#### OPERATION OF FAUCET

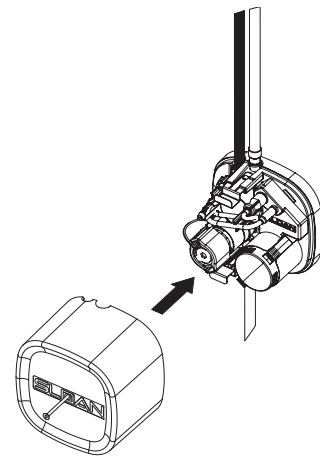
A continuous ambient field is emitted and monitored by the faucet system. As the user's hands enter the effective range, the sensor activates the solenoid valve allowing tempered water to flow from the faucet. Water will flow until the hands are removed or until the faucet reaches its automatic time out setting. When hands are moved away from the faucet, the capacitance sensor deactivates the solenoid valve, shutting off the water flow. The system automatically resets and is ready for the next user.



Twist top of battery pack counter-clockwise to open. Remove batteries and replace batteries with four (4) new "AA" batteries. Twist top of battery pack clockwise to close.



Replace cover.



#### BATTERY REPLACEMENT

**NOTE: REPLACE BATTERY WHEN RED BATTERY INDICATOR LED FLASHES 4 TIMES EACH TIME FAUCET IS IN USE OR WHEN FAUCET STOPS FUNCTIONING.**

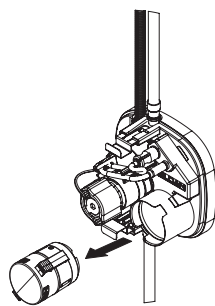
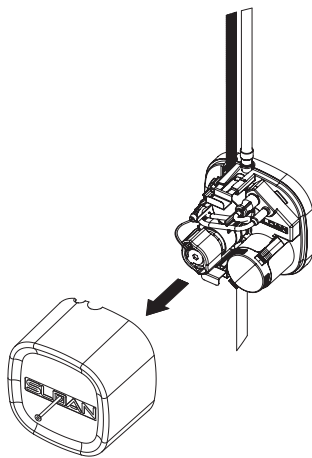
No need to turn off water.

Loosen screw with hex wrench and remove cover.

**NOTE: IT IS POSSIBLE FOR THE FAUCET TO ACTIVATE WHEN THE CAP WIRE OR SOLENOID IS TOUCHED OR WHEN THE CONTROL MODULE COVER IS BEING SCREWED ONTO THE MANIFOLD.**

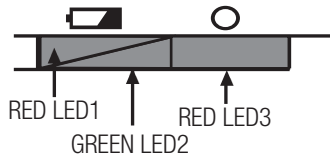
Slide cover forward and lift off.

Remove battery case.



## BASYS® Faucet Capacitance Sensing Activated

### LED DISPLAY DIAGNOSTIC CODES



**NOTE: LED1 and LED2 are for battery and programming related items. LED3 is for solenoid service.**

Function	LED1	LED2	LED3	Notes
<b>Power Up Success (Battery Only Models)</b>		Blinks 5x		Blinks 1 every second (5 seconds); for battery power
<b>Power Up Success (Adapter Models)</b>	Blinks 3-5x	Blinks 3-5x		Blinks 1 every second (5 seconds); for adapter power
<b>Low Battery</b>	Blinks 4x			Battery power is low; During hand detection
<b>Clean Mode</b>		Blinks		Once every 2 seconds; Touch faucet body more than 8 seconds, water hold for 2 minutes
<b>Water Hold</b>		Blinks		Once every 1 second; If water turns on/off 5 times in 20 seconds, faucet turns off for 1 minute
<b>Solenoid Latch Failure</b>			Blinks	Two LED blinks; After hand removed from detection zone
<b>Cap Sensor Fails to Calibrate</b>		Blinks		4 times per second; Before first water burst detection for cable is not installed correctly
<b>Ambient Electrical Noise Too High</b>		Blinks		4 times per seconds; After first water burst

### TROUBLESHOOTING GUIDE

#### 1. Faucet DOES NOT function.

- A. Batteries not installed.  
Install batteries.
- B. Capacitance cable not connected.  
Connect cable.

#### 2. Faucet delivers water in an uncontrolled manner.

- A. Contact Sloan Technical Support.

#### 3. Faucet DOES NOT deliver any water when sensor is activated. Solenoid valve produces an audible “CLICK.”

- A. Water supply stop(s) closed.  
Open water supply stop(s).
- B. Water supply stop strainer(s) clogged.  
Remove, clean, and reinstall water supply stop strainer(s). Replace strainer(s), if required.

#### Solenoid valve DOES NOT produce an audible “CLICK.”

- A. Battery low (battery powered models).  
Replace battery (refer to Battery Replacement section of guide).
- B. Power failure.  
Check power supply.

#### 4. Faucet DOES NOT stop delivering water or continues to drip after user is no longer detected.

- A. Contact Sloan Technical Support.

#### 5. Faucet delivers only a slow flow or dribble when sensor is activated.

- A. Water supply stop(s) are partially closed.  
Completely open water supply stop(s).
- B. Water supply stop strainer(s) clogged.  
Remove, clean, and reinstall water supply stop strainer(s). Replace strainer(s), if required.
- C. Spray head is clogged.  
Remove, clean, and reinstall spray head. Replace spray head, if required.
- D. Contact Sloan Technical Support.

#### 6. LED indicator blinks when faucet is in use.

- A. Battery low (battery powered models).  
Replace battery (refer to Battery Replacement section of guide).

#### 7. The water temperature is too hot or too cold on a faucet connected to hot and cold supply lines.

- A. Supply stops are not adjusted properly.  
Adjust supply stops.

### CARE AND CLEANING

**DO NOT USE** abrasive or chemical cleaners (including chlorine bleach) to clean faucets that may dull the luster and attack the chrome or special decorative finishes. Use **ONLY** mild soap and water, then wipe dry with clean cloth or towel. While cleaning the bathroom sink, protect the faucet from any splattering of cleaner. Acids and cleaning fluids will discolor or remove chrome plating.

**When assistance is required, please contact Sloan Technical Support at: 1-888-SLOAN-14 (1-888-756-2614).**