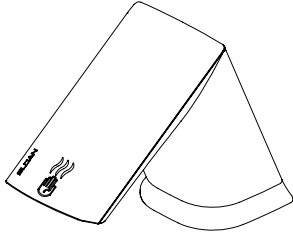
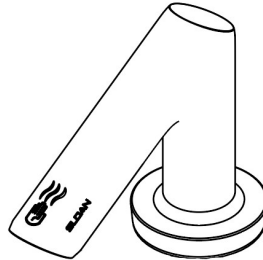


## INSTALLATION INSTRUCTIONS FOR SLOAN HAND DRYERS

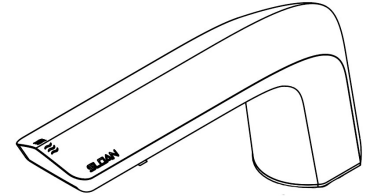
**NOTE** Hand Dryer Spouts for use on AER-DEC™ sinks only.



**EHD-510**  
BASYS® Style  
Hand Dryer Spout



**EHD-420**  
Rush Street® Style  
Hand Dryer Spout



**EHD-410**  
Clark Street® Style  
Hand Dryer Spout

### SLOAN® LIMITED WARRANTY SUMMARY

Sloan Valve Company ("Sloan"), warrants its products against defects in materials and workmanship, excluding damage caused by matters beyond Sloan's reasonable control. Instructions for filing claims can be found in the Limited Warranty which can be obtained at [www.sloan.com](http://www.sloan.com) or by requesting a free copy by telephone at 888.756.2614. Sloan will repair or replace your defective product, or provide a refund, as your exclusive remedy. This is only a general summary of Sloan's Limited Warranty so it is important to note that the specific terms, conditions, limitations and exclusions, including the duration of warranty coverage for your particular Sloan product, are contained in the actual Sloan Limited Warranty. The Limited Warranty is subject to applicable laws in your country, state, province or other jurisdiction—and disputes arising under the Limited Warranty are to be resolved by binding arbitration unless you provide Sloan with an opt-out notice no later than 30 days after your purchase date. In case of a conflict with this summary, the terms and conditions set forth in the complete Limited Warranty will prevail.

## PRIOR TO INSTALLATION

### IMPORTANT:

- Turn OFF electrical power to the electrical outlets, then unplug all electrical units prior to installation. Electrical power MUST remain off until installation is complete.
- Wear proper safety equipment for installation.
- **INSTALL ALL PLUMBING IN ACCORDANCE WITH APPLICABLE CODES AND REGULATIONS.**
- **INSTALL ALL ELECTRICAL WIRING IN ACCORDANCE WITH NATIONAL/LOCAL CODES AND REGULATIONS.**
- **120 OR 220 GFI OUTLETS MUST BE USED. VERIFY VOLTAGE REQUIREMENT OF MOTOR ASSEMBLY.**
- **HAND DRYER FEATURES VARIABLE HEAT AND SPEED CONTROLS AND REQUIRES A MAXIMUM OF 1500 WATTS.**
- **EACH HAND DRYER MOTOR REQUIRES A DEDICATED 20 AMP GFI CIRCUIT.**
- **USE APPROPRIATE PRECAUTIONS WHILE CONNECTING THE POWER SOURCE.**

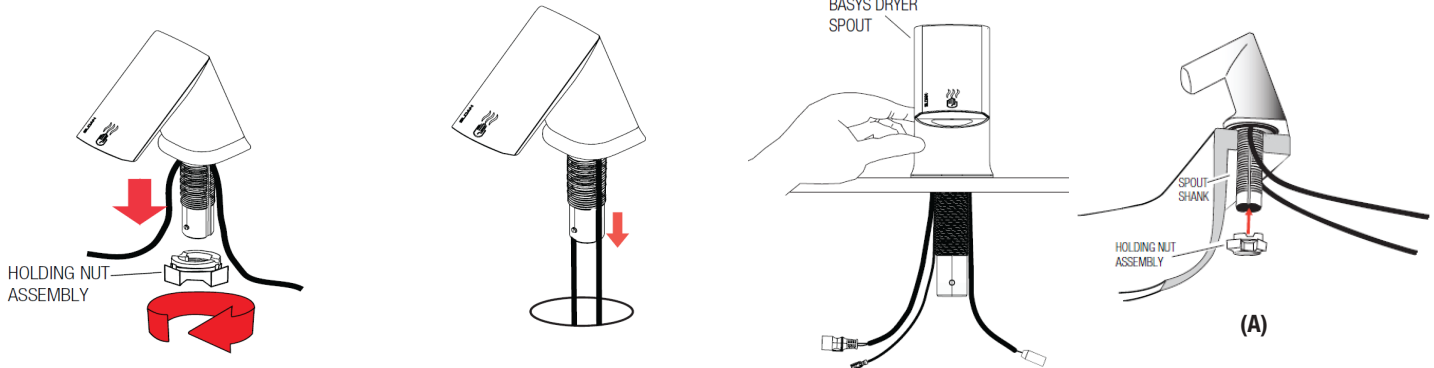
If you have questions about how to install your hand dryer, call Sloan Technical Support at 1.888.756.2614 or 1.888.SLOAN.14

## TOOLS REQUIRED FOR INSTALLATION

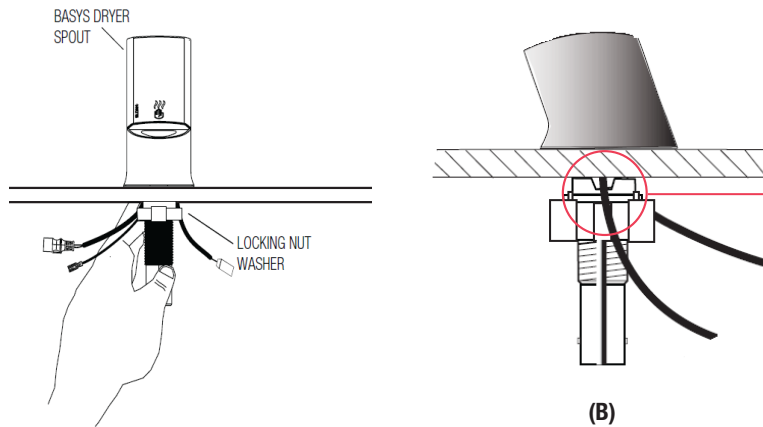
- Assorted Screwdrivers
- Drill and Drill Bits
- Wrenches
- Utility Knife
- Wire Cutters

## 1 - INSTALL SPOUT

1. Remove Holding Nut Assembly from the Spout Shank. Unscrew counter-clockwise.  
**NOTE** BASYS model shown; instructions applicable for all Dryer Spouts.
2. Ensure the wires are located inside corresponding slots on the sides of the Spout Shank. Insert Spout Shank into the deck hole.
3. Holding the Spout down on the sink deck, spread wires away from Spout Shank, align wires into grooves on Locking Nut Washer (A). Turn the Locking Nut until it makes contact with the wires. Align spread wires in corresponding relief grooves on top of the Locking Nut Washer.



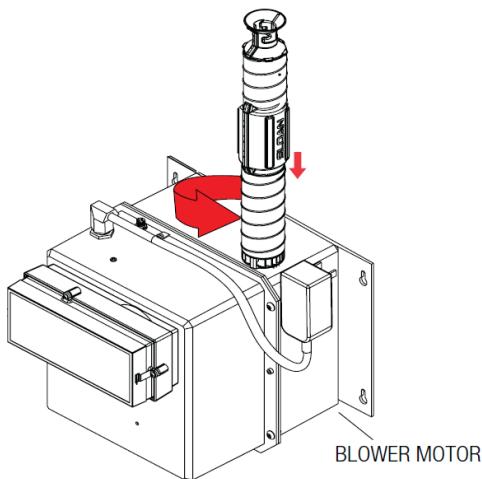
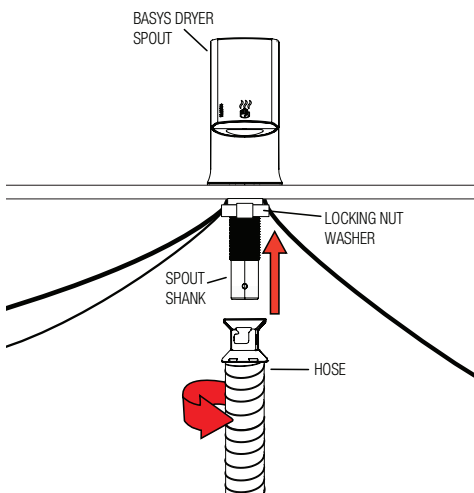
4. (B) Spread the wires horizontally. Turn the Locking Nut until snug, making sure the wires are in the corresponding wire relief grooves on the Locking Nut Washer. Align the Spout as desired and tighten the Locking Nut until the Spout is firmly locked into place.



**NOTE** Double-check to ensure wires are properly placed in the wire relief grooves. If the wires are pinched, the Dryer will not operate.

## 2 - CONNECT HOSE

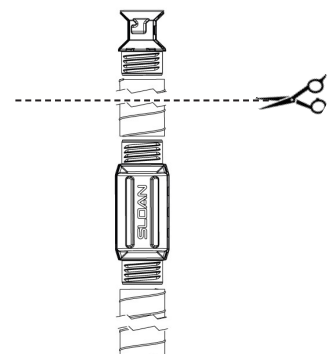
1. Align slots in flared connector end of Hose with shank guides. Slide over the Spout Shank until it stops. Rotate the flared connector clockwise until it locks into place (you will feel it snap into place).
2. Align slots of round squared connector end of Hose to opening guides on Hand Dryer Motor into the opening until it stops. Rotate the connector counter-clockwise until it locks into place.



### TRIM THE HOSE (OPTIONAL)

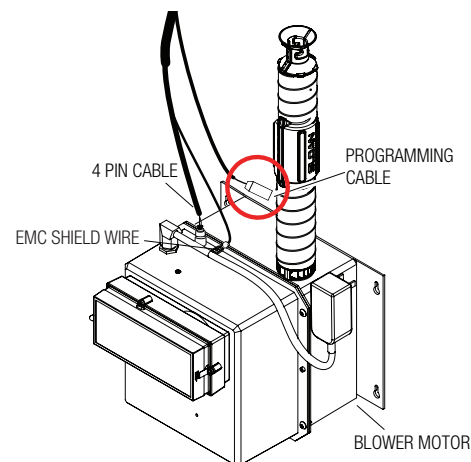
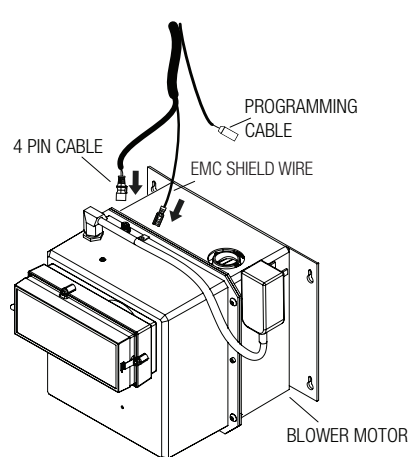
The Hose can be trimmed for better fitment under deck. Determine the location you want to trim on the Hose. Using a utility knife, cut the Hose fabric and then use wire cutters to carefully cut the wire in the Hose. Reattach the Hose to the end cap connector by rotating the Hose into the connector.

**CAUTION** Trimmed wires within the Hose are sharp; handle with care.



### 3 - CONNECT WIRES

1. Plug the four (4) pin cable from the Spout into the four (4) pin socket on the Dryer Blower Motor. Plug the EMC Shield Wire into the ground tab on the Blower Motor.
2. Leave the Programming Cable unattached. Do not remove or cut off cable. Cord can be bundled.  
**Note** Rush and Clark Street models do not have a Programming Cable.
3. Plug the Dryer unit into outlet.  
**Note** each Blower Motor requires its own dedicated 20 amp GFI circuit.



### 4 - CALIBRATION AND SETTINGS

1. Wait 15 seconds for the Dryer Spout to calibrate. A blue LED "DRY" light will be present for 3 seconds during calibration. **NOTE** Be sure not to obstruct the sensor with hands or any object during calibration, as this can lead to inaccurate calibration.
2. Put hands under Dryer Spout to confirm the unit is working. The blue LED "DRY" light will appear to confirm sensing of hands.  
**NOTE** If the Sensor does not detect as intended, unplug the Dryer Motor, disconnect the EMC Shield Wire from the Blower Motor, plug in unit, wait 15 seconds for calibration, then test unit.
3. To change the heat setting, turn the HEAT knob on the Dryer Motor counter-clockwise toward the L (low) to decrease the heat, or turn the HEAT knob clockwise toward the H (high) to increase the heat.  
**NOTE** Rotating the HEAT knob all the way to the left to the low (L) position will turn the heater OFF. No current will be supplied and no power will be consumed from the heater.
4. To change the speed setting, turn the MOTOR SPEED knob on the Dryer Motor counter-clockwise toward the L (low) to decrease the speed, or turn the MOTOR SPEED knob clockwise toward the H (high) to increase the speed.

### CARE AND CLEANING

#### IMPORTANT: DISCONNECT ELECTRICAL SUPPLY TO DRYER PRIOR TO SERVICING!

Gently wash Dryer Spout using a soft cloth or sponge and a mild soap or detergent with lukewarm water to loosen dirt and grime.

**DO NOT USE** abrasive or chemical cleaners (including chlorine bleach) to clean Dryer Spout that may dull the luster and attack the chrome or special finishes.

To clean the pre-filter, unclip the pre-filter, rinse the pre-filter with water and dry. Reinstall. **DO NOT CLEAN THE HEPA FILTER OR ALLOW IT TO COME INTO CONTACT WITH WATER.** Replace filter if it becomes wet. Wet fibers will expand and block airflow into Dryer. With normal use, Dryer will require cleaning of the pre-filter and inspection of the HEPA filter at least once per year. With frequent inspection and cleaning, HEPA filters can last up to three (3) years. Heavier usage, or if the Dryer is installed in an environment with excessive lint, dust, or other particles, will require more frequent cleaning and replacement of the HEPA filter.



### TROUBLESHOOTING - GENERAL

#### 1. Dryer Not Operating as Expected, Such as Intermittent Operation.

- A. Wires were pinched during installation. Ensure the wires are in the corresponding wire relief grooves on the Locking Nut Washer (shown on page 2, Steps 3A & 4B).
- B. If the Dryer Motor has a steady light but the Dryer Spout is not displaying the blue "DRY" light, check all connection plugs to ensure proper connection.
- C. If the "DRY" light flashes when a target is present, or no "DRY" light appears and the Dryer Motor light is flashing, please refer to the error codes table on page 4.
- D. Filter needs to be cleaned. Clean pre-filter as described in the Care and Cleaning section above and reinstall.

#### 2. Sensor is Not Detecting Hand.

- A. Disconnect the EMC Shield Wire and reset the unit. To reset the unit, unplug Dryer Motor, disconnect the EMC Shield Wire from the Blower Motor, plug in unit, wait 15 seconds for calibration, then test unit.

#### 3. The Air Coming From the Dryer Spout is Too Warm / Not Warm Enough.

- A. On the Dryer Blower Motor, rotate the HEAT knob counter-clockwise toward the low (L) position. Note that if you turn the HEAT knob all the way to the left toward the low (L) position, the heat will be turned off from the unit completely.
- B. On the Dryer Blower Motor, rotate the HEAT knob clockwise toward the high (H) position.

#### 4. The Air Coming From the Dryer Spout is Too Loud / Dry Time Too Slow.

- A. If the air is too loud, on the Dryer Blower Motor, rotate the MOTOR SPEED knob counter-clockwise toward the low (L) position.
- B. If the dry time is too slow, on the Dryer Blower Motor, rotate the MOTOR SPEED knob clockwise toward the high (H) position.

## TROUBLESHOOTING - ERROR CODES AND SOLUTIONS

DRYER STATE	ERROR MESSAGE	1ST FLASH	2ND FLASH	DRYER OPERATION	POSSIBLE SOLUTION
<b>OFF</b>	No error or condition, user absent	No flash, steady ON (at dryer box) and No flash, steady OFF (at spout)	—	Dryer ready for operation	Normal
<b>ON</b>	No error or condition, user presenting hands	No flash, steady OFF (at dryer box) and No flash, steady ON (at spout)	—	Dryer running	Dryer running while hands are under unit Normal
<b>ON</b>	Time to clean pre-filter or change HEPA filter	1 short	1 long	Dryer still runs	Check and clean pre-filter. Code should reset after repowering unit. If code reappears, then HEPA filter may need replacing.
<b>OFF</b>	Motor under current	1 long	4 short	Dryer stops running until power is removed, fault has been repaired, and power reapplied.	Motor is drawing less current than normal. Wire in motor could be disconnected. Motor Brush could be hung up or worn out. Replace motor. Call Sloan Tech Support at 1.888.756.2614.
<b>OFF</b>	Motor quick over current	1 long	3 short	Dryer stops running until power is removed, fault has been repaired, and power reapplied.	Motor drew a quick over current than normal, possibly caused by a quick over voltage condition or something blocking the motor. Motor could be failing. Replace motor. Call Sloan Tech Support at 1.888.756.2614.
<b>ON</b>	Heater open condition	2 long	4 short	Dryer still runs. Code clears when power is removed and fault is repaired.	Heating element had opened during operation (thermostat tripped). Check for clogged filter, blocked or kinked hose and blocked muffler. If problem persists, heating element may be disconnected or broken. Reconnect or replace. Call Sloan Tech Support at 1.888.756.2614.
<b>ON</b>	Notification of recent mains over voltage	3 long	1 short	Dryer still runs	Dryer had a spike of higher voltage than normal. Code is for information purposes. Code will clear if unit power is removed and reapplied.
<b>ON</b>	Notification of recent mains under voltage	3 long	2 short	Dryer still runs	Dryer had a spike of lower voltage than normal. Code is for information purposes. Code will clear if unit power is removed and reapplied.
<b>OFF</b>	Mains over voltage in progress	3 long	3 short	Dryer stops running until mains voltage returns to a safe level. When safe level returns, dryer runs. The code changes to notification of recent mains over voltage.	Dryer has unsafe voltage applied. Check voltage source. Code will reset when voltage is back to normal.
<b>OFF</b>	Mains under voltage in progress	3 long	4 short	Dryer stops running until mains voltage returning to a safe level. When safe level returns, dryer runs. The code changes to notification of recent mains under voltage.	Dryer has unsafe voltage applied. Check voltage source. Code will reset when voltage is back to normal.
<b>OFF</b>	Control Temperature over temp severe	4 long	3 short	Dryer stops running until power is removed, fault has been repaired, and power reapplied.	Dryer control is running very hot. Filter clog may have been disregarded. Check filter and reapply power. If recurring, call Sloan Tech Support at 1.888.756.2614.

If further assistance is required, please contact  
Sloan Technical Support at 1.888.756.2614 or 1.888.SLOAN14

The information contained in this document is subject to change without notice.

**SLOAN VALVE COMPANY • 10500 SEYMOUR AVENUE • FRANKLIN PARK, IL 60131**

Phone: 1.800.982.5839 or 1.847.671.4300 • Fax: 1.800.447.8329 or 1.847.671.4380 • sloan.com