

SLOAN®

Full Line Sink Collection

Aesthetic appeal. Proven performance.





When aesthetics meet performance

Sloan offers sink designs that suit various settings, from luxury hotels to airport terminals, modern offices to contemporary hospitals. The sinks featured in the following pages are designed to match the aesthetic of our faucets, soap dispensers, and hand dryers. Sloan's collection of sinks provide a comprehensive solution to complete your commercial restroom.

Sustainable, durable, and customizable

Sustainable: Sustainable building isn't a trend, it's the baseline. All Sloan sinks are designed to take full advantage of our water-saving sensor faucets.

Durable: Many Sloan sinks are IAPMO-certified, passing a complete battery of tests to prove they can stand up to any commercial application.

Customizable: Many Sloan sinks can be built with custom sizes, materials, colors, and configurations. Customize and view your design in real time with Sloan's Sink Configurator, or use our online architectural worksheets to specify your ideal configuration.

Fabricated sinks



AER-DEC®
Innovative design integrating faucet, soap dispenser, and hand dryer



Designer Series™
Impeccable craftsmanship for upscale customization

Molded sinks



SloanStone® Quartz
The perfect blend of beauty, durability, and cost-effectiveness



SloanStone® Solid Surface
Rugged and easy to maintain—perfect for high-traffic restrooms

Specialty sinks



Vitreous China
Reliable and economical



Stainless Steel
Hands-free stations for hygienic environments

Designer Series™ DSOF-82000 Open Front Sink in Corian® Sparkling Granita with laminated vertical cabinet style enclosure with Wilsonart® Radiant Brass and BASYS® EFX-250 Faucet and Sloan ESD-500 Soap Dispenser in Polished Brass accompanied with custom Sloan Floating Mirrors.



AER-DEC Integrated Sink in two-tone Silestone® Concrete Pulse and Silestone Et Statuario basins with Rush Street® fixtures in Graphite and laminated vertical cabinet style enclosure with Wilsonart® Fawn Cypress accompanied with Sloan 24x36 inch Framed Mirrors in Graphite.

The AER-DEC Integrated Sink

Soap, rinse, dry—all three steps, without taking any.

The ultimate innovation for any high-end restroom, the AER-DEC combines soap dispenser, faucet, hand dryer, and sink basin into one beautiful, touch-free, hygienic, highly efficient system.

Visitors can now soap, rinse, and dry their hands without reaching for paper towels or walking to a separate dryer—so your stylish restrooms stay neater and require less cleaning.

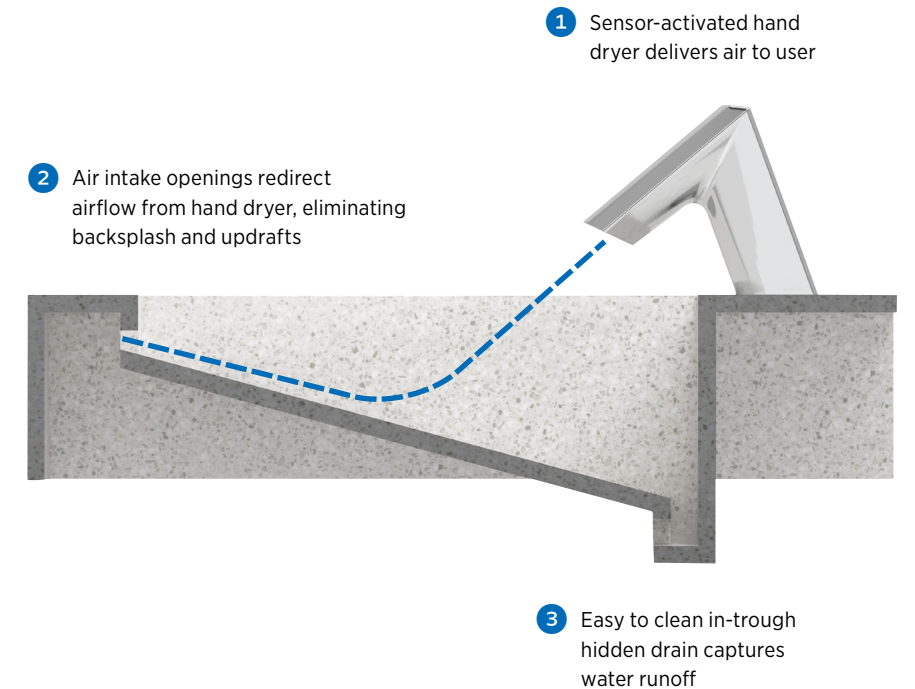
The AER-DEC integrates the finest concepts in commercial sinks into a cutting-edge installation with a sleek, contemporary design that not only looks fantastic but also performs terrifically in any setting.

Integrated to perfection

AirBasin brings innovation to airflow

Each component of the AER-DEC is designed to create a fully integrated system. The key to that integration is the patented AirBasin that redirects air and water flow to eliminate backsplash and updraft.

The touch-free, hygienic design of the AER-DEC saves water, reduces energy consumption, and reduces the need for paper towels. It's good for the environment. Good for the user. Good for business.



AER-DEC® features



Sink basin: Keeping all three elements of the hand wash process in the basin reduces slip and fall risk from water dripping on the floor



Soap dispenser: Dispenses a pre-measured application of soap to reduce soap waste



Faucets: Battery, plug-in, hardwired, or power-harvesting options (solar or turbine) for energy efficient flexibility



Faucets, soap dispenser, and hand dryers: Active Infrared sensing for hygienic touch-free operation



Hand dryers: Adjustable dry speed and heat settings for sound, speed, and temperature comfort



Hand dryers: Industry-leading electronic HEPA filter removes 99.97% of dust, mold, bacteria, and airborne particles as small as 0.3 microns.

Fixture options that go above and beyond

Choose from three innovative collections that promote cleanliness at every level, all available in our five distinct finishes.



BASYS®

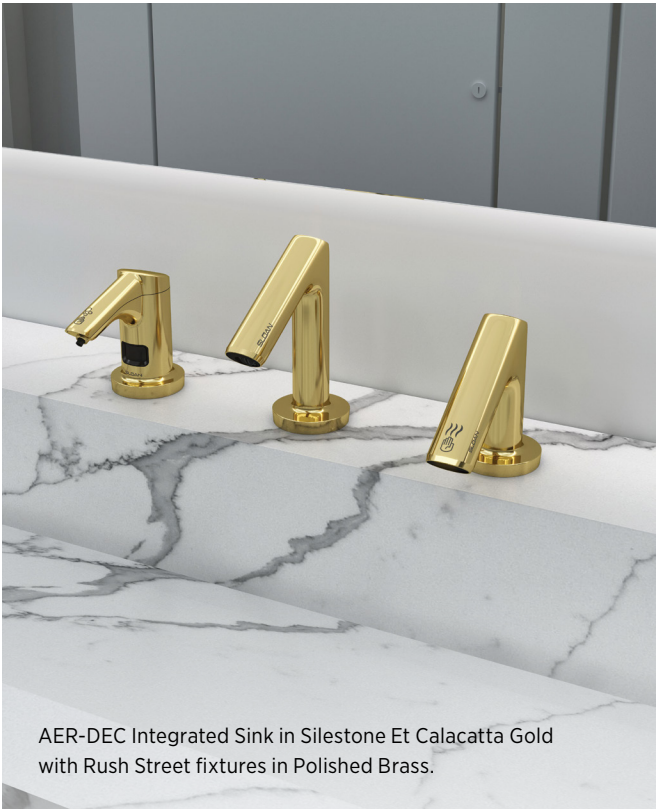
Infuse your space with a sleek and minimalist aesthetic with BASYS fixtures, inspired by the majestic allure of glaciers. These fixtures not only embrace angular simplicity but also incorporate a host of features that can be effortlessly accessed from above the sink deck.

When prioritizing both design and ease of maintenance, look no further than the BASYS style fixtures. Offering various faucet heights and boasting Sloan's stunning selection of finishes, BASYS carves its path in the design landscape.

Clark Street®

Bring architectural facets to your next project with Clark Street fixtures. Inspired by prisms, Clark Street fixture designs are geometric and faceted to refract light as you approach. The elegant appearance suits all high-end commercial applications for a dazzling aesthetic.

Whether you need that extra element to tie it all together or durable hardware that keeps your vision whole, these premium faucets, soap dispensers, and hand dryers deliver.



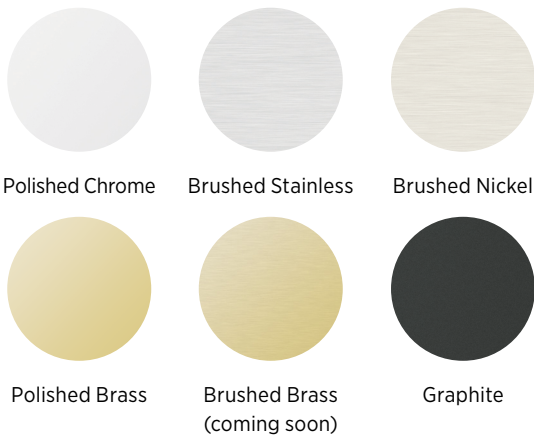
Rush Street®

Fuse glamour and technology with Rush Street fixtures. Inspired by industrial forms, Rush Street fixtures bring together soft corners, cylindrical shapes, and rounded edges to create a simple, round aesthetic with a streamlined look and feel.

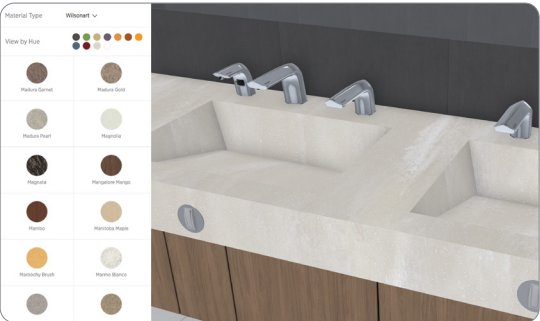
This premium, touch-free pairing can add the finishing touch to bring your vision to life and offers durable hardware that will deliver for years to come.

Fixture finishes

Many faucets and soap dispensers are available in our unique finishes.



Configured to your project



Sloan Sink Configurator

Customize and view your design in real time with Sloan's Sink Configurator. When you've finished your design you can download renderings, pricing and configuration details, rough-in and line drawings, and installation instructions.

- Configure every aspect of your sink from the deck and basin form, to the number of stations, and additional specialty features
- Choose between hundreds of material options from leading manufacturers
- Select from a variety of Sloan's stylish fixtures

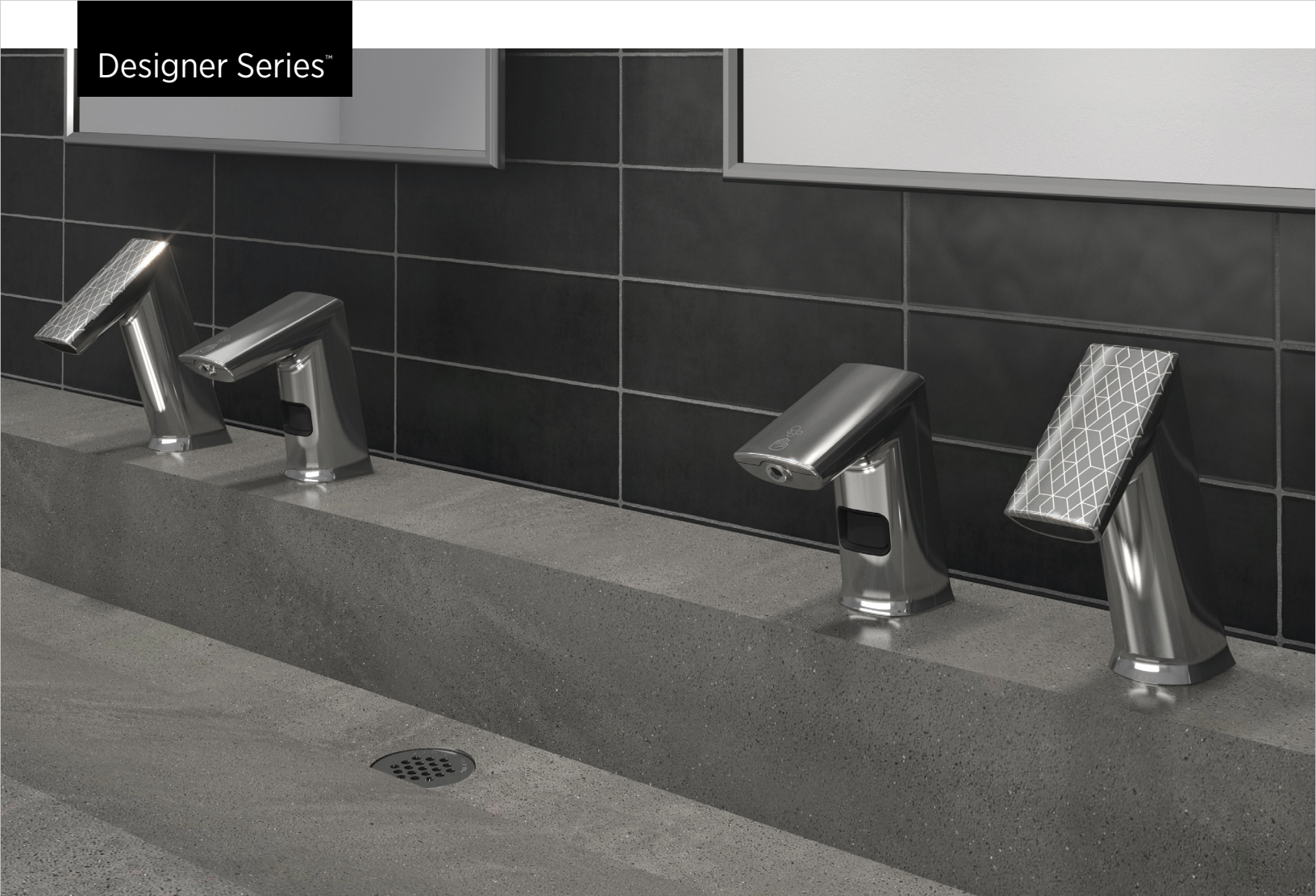
Create your custom sink at configurator.sloan.com



Choose from 100+ color options in solid surface and quartz.

There is no limit to the ways you can customize your AER-DEC sink.

See pages 10-12 for more details.



Designer Series Gradient Sink DSG-82000 in Corian® Carbon Aggregate shown with BASYS® EFX-250 Faucet with engraving and Sloan ESD-500 Soap Dispenser accompanied with Sloan 24x36 inch Framed Mirrors in Polished Chrome.

Designer Series Sinks

Style without limits

For upscale settings where your design needs to make a statement, Sloan’s Designer Series offers an endless array of designs, colors, finishes, and functionality.

As different as they may be in execution, all Designer Series Sinks are visually striking, impeccably crafted, and remarkably durable. They bring a clean and modern appeal to restrooms of any size in hotels, restaurants, office suites, and high-end retail establishments.

All Designer Series Sinks are available in Corian®, Quartz, Caesarstone®, Cambria®, or Silestone®, with more than 100 color options to fit any design vision. After selecting a sink color, enhance that vision by pairing the design with any of Sloan’s faucets and soap dispensers.

Make a statement

The Designer Series™ is all about customization, and it starts with shape. Bold, innovative shapes tell visitors they are not in just any restroom. If your contemporary designs push the boundaries of convention, you can customize a Designer Series Sink to make your vision a reality.




Drain finishes

Match your drain to your fixtures with the DS-57A ProDrain Grid Strainer, compatible with Designer Series Sinks (excluding DSCT Series) and available in Polished Chrome, Brushed Stainless, Polished Brass, Brushed Nickel, and Graphite.

Fixture finishes


BASYs®, Clarks Street, and Rush Street fixtures are available in our unique finishes.




Polished Chrome




Brushed Stainless



Polished Brass



Brushed Brass (coming soon)



Brushed Nickel



Graphite

Gradient

DSG Series



- Available in 1, 2, 3, and 4+ stations
- Faucet and soap dispenser options available
- See page 12 for mounting options

Shown with Combination ESD-501 (EFX-250 Faucet and ESD-500 Soap Dispenser)

Counter Top

DSCT Series



- Available in 1, 2, 3, and 4+ stations
- Faucet and soap dispenser options available
- See page 12 for mounting options

Shown with Combination ESD-601 (EBF-615 Faucet and ESD-600 Soap Dispenser)

Weir Deck

DSWD Series



- Available in 1, 2, 3, and 4+ stations
- Faucet and soap dispenser options available
- See page 12 for mounting options

Shown with Combination ESD-411 (EBF-410 Faucet and ESD-410 Soap Dispenser)

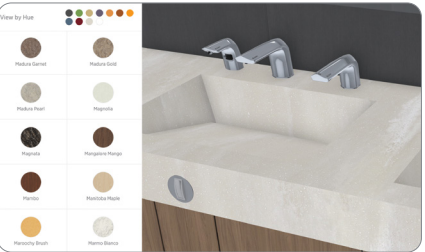
Open Front

DSOF Series



- Available in 1, 2, 3, and 4+ stations
- Faucet and soap dispenser options available
- See page 12 for mounting options

Shown with Combination ESD-801 (EBF-85 Faucet and ESD-800 Soap Dispenser)



Sloan Sink Configurator

Customize and view your design in real time with Sloan’s Sink Configurator.

Create your custom sink at configurator.sloan.com

Choose from 100+ color options in solid surface and quartz.

There is no limit to the ways you can customize your Designer Series Sink. See pages 10–12 for more details.



AER-DEC® Integrated Sink in Silestone® Cala Blue with Clark Street Fixtures in Graphite and laminated vertical cabinet style enclosure in Wilsonart® White.

Design your sink

Design a sink that matches your need

From configuration to color, your customization options for **AER-DEC** and **Designer Series** sinks are limited only by your imagination.

You can specify custom widths, side and backsplashes, or various mounting options. You can include a hand dryer (AER-DEC only), faucet, and soap dispenser that can be individual per station or be shared between stations. LED lights within the basin can even change color at the touch of a remote.

We believe sinks should enhance your restroom design vision. That's why you can choose an endless assortment of design options for the AER-DEC and Designer Series sinks from size and configuration to material and color.

Customize and view your design in real time with Sloan's Sink Configurator. When you've finished your design you can download renderings, pricing and configuration details, rough-in and line drawings, and installation instructions.

Create your custom sink at configurator.sloan.com

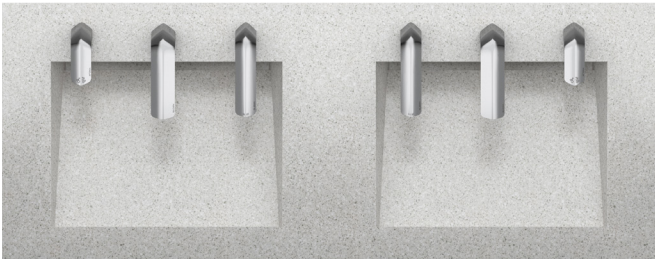
Materials and colors

The AER-DEC® Integrated Sink and Designer Series™ basin and enclosures are available in hundreds of material options from industry leading manufacturing partners including:

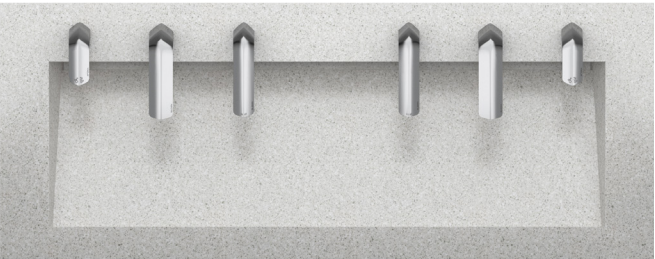


Choose a configuration

Basins can be centered or offset to accommodate traffic flow or space restrictions. All basins can be continuous trough style or individual basins. The AER-DEC® and Designer Series® sinks meets ADA requirements if properly installed. See page 12 for mounting options.



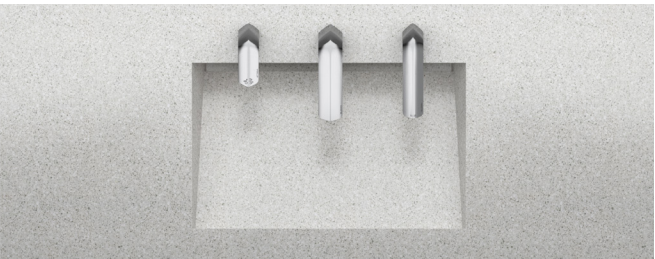
Individual basins



Continuous trough basin



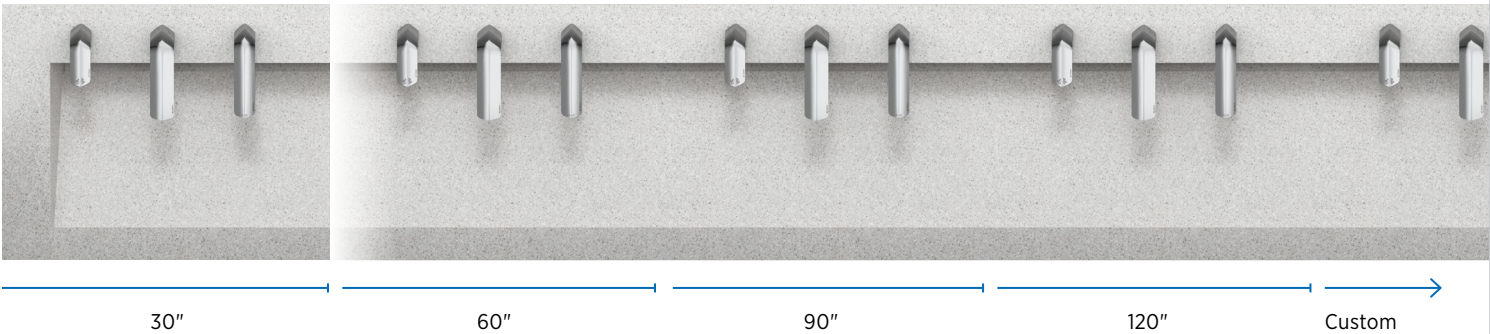
Single side counter extension



Dual side counter extensions

Choose a width and mounting type

Basins can be ordered in custom widths or in standard increments of 30 inches, up to 240 inches. The sink can be mounted in a variety of ways to fit snugly into an alcove, have a wall on either side, or mount directly to an open wall with open side. Build your restroom around the your sink or the sink around your existing restroom.



Design Options

Enclosure and mounting options



Vertical cabinet with laminated doors

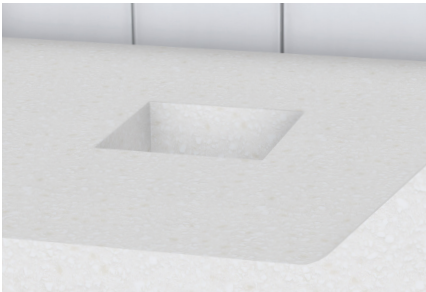


Angled or Vertical stainless steel enclosure



Angle brackets

Additional options



Trash chute and paper towel holders



Multiple sink heights



LED lighting in sink basin



Beveled or rounded sink edges and bag hooks



Two tone sink basins



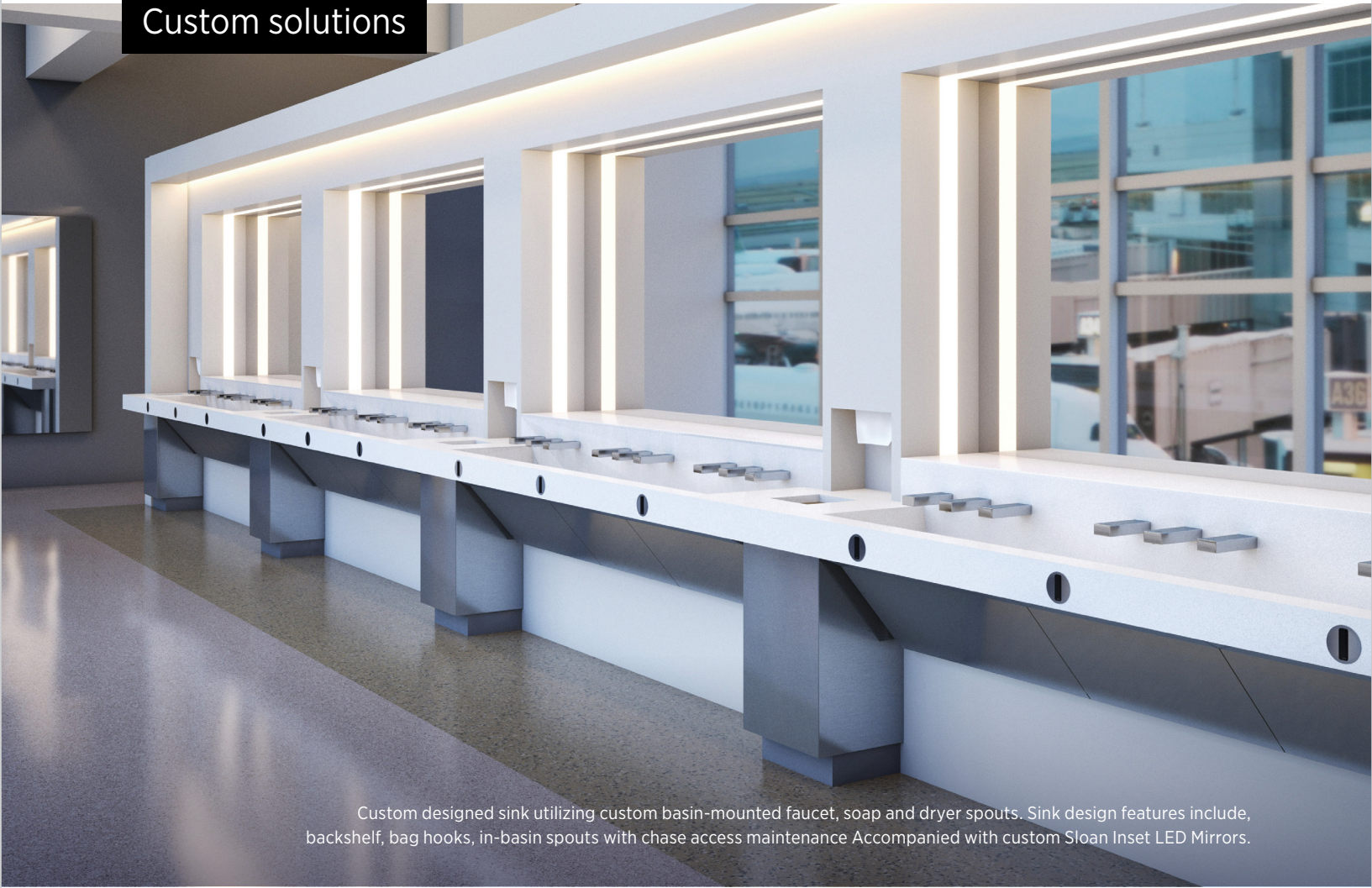
Baby changing stations

Five fabulous fixture finishes

Our wide selection of fixtures are available in our unique finishes. Now also available for our sink drains.



Custom solutions



Your vision.
Your sinks.

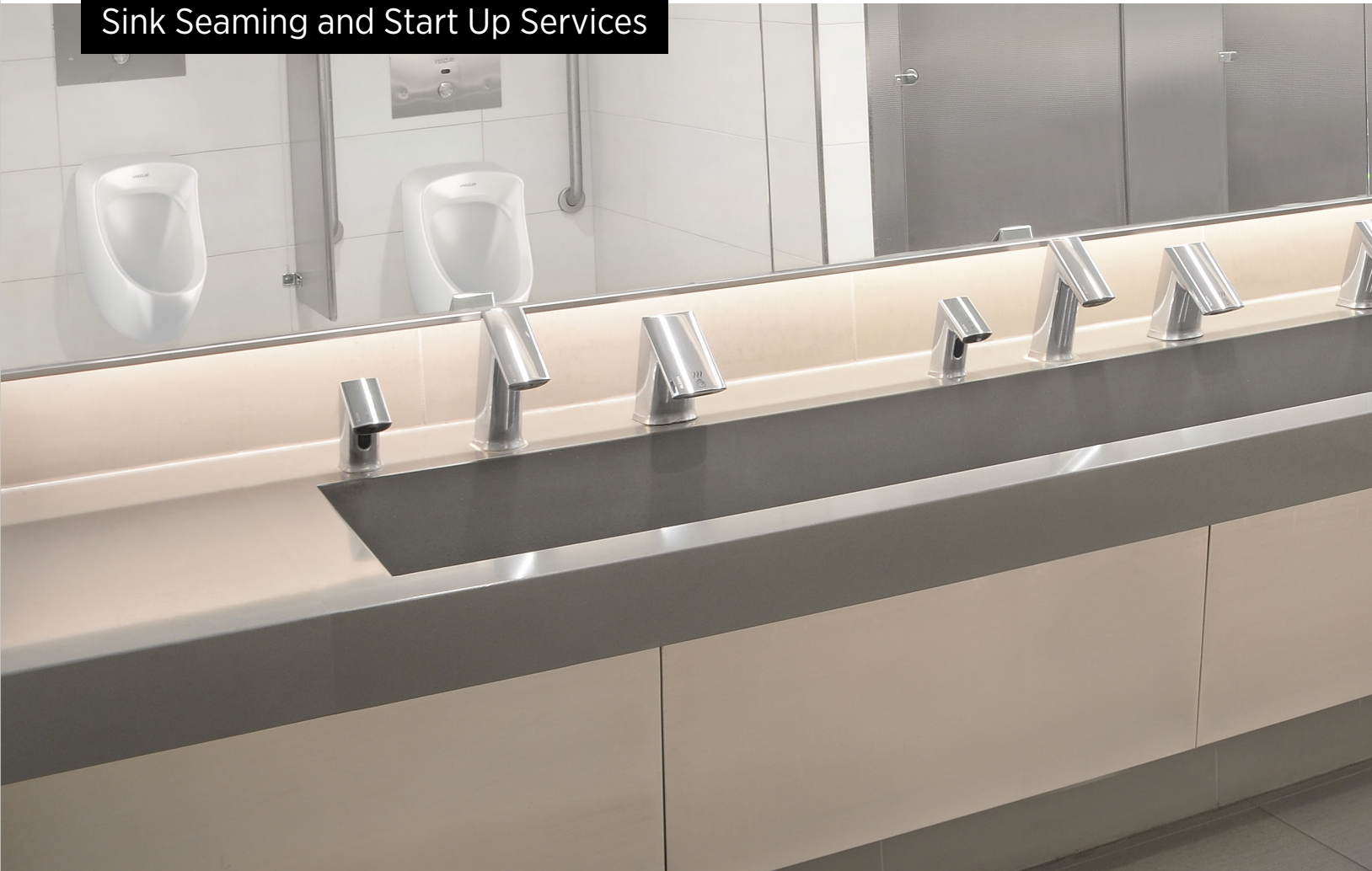
Create a one-of-a-kind sink with
limitless possibilities

Customized sink solutions offer architects and designers a tailored and versatile means to seamlessly incorporate hand hygiene into a space's overall aesthetic while simultaneously elevating the spaces functionality. Our sinks can be created from virtually any substrate, all the while complying to all regulatory codes, as well as meeting crucial building certifications.

Contact your Sloan rep to create a one-of-a-kind sink for your project.



Custom designed sink utilizing basin mounted SF-2850 and back shelf.



AER-DEC® AD-85000 Integrated Sink System in Corian® Dove with seamed counter spaces and angled stainless steel enclosure.

Your project done right from the start

Ensuring your sinks look beautiful and professional

We are your go-to professional resource for hassle-free sink installation oversight and seaming service. Simplify your most complex Sloan sink installations with the help of trusted Sloan Sink Technicians. Our team can support you through your installation process right down to the final seam.

Seaming Services

Save time and effort on your next restroom build with sink seaming from Sloan. Sloan's approved professionals provide the high-quality seaming service you need to complete your vision worry-free, scheduled to fit your project timeline.

Seaming Service

- Ideal for projects that require seaming service: Corian® sinks over 120" long or quartz sinks over 119" long
- Seaming service provided by trained Seaming Service Technicians
- Hassle-free scheduling of seaming services

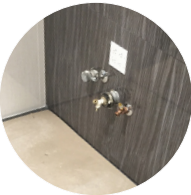


AER-DEC® AD-85000 Integrated Sink System in quartz with professional seaming and angled stainless steel enclosure.

Sink Start Up Services

Our Sloan Start Up Technicians are here to guide you through the sink installation process, making sure that it is hassle-free and void of any installation errors or unforeseen product malfunction.

- Ideal projects that may benefit from start up service: large, complex, multi-sink projects
- 2-3 site visits for accurate sink installation and guidance on best practices scheduled at your convenience
- Product order delivery confirmation, order accuracy verification, and solutions for any component damage
- Sink installation inspection provided by highly qualified Sloan Application Engineer



1. Our technician performs a site visit

We'll perform a job site walk-through and provide a thorough review of wall construction and electrical rough-ins, as well as assess the current water and drainage system.



2. The technician oversees the installation process

Sloan technician will confirm, guide, answer questions, resolve issues. They will not perform the installation or complete any physical work.



3. Project sign-off and quality control

Our technician verifies that all components are installed as expected and functioning as intended.



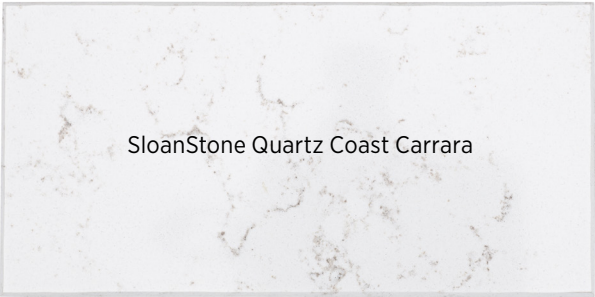
SloanStone Quartz Gradient Sink QSGR-81000 (3 sinks) in SloanStone Stone Gray with BASYS® EFX-250 Faucet and Sloan ESD-500 Soap Dispenser and angled stainless steel enclosure.

SloanStone Quartz Sinks

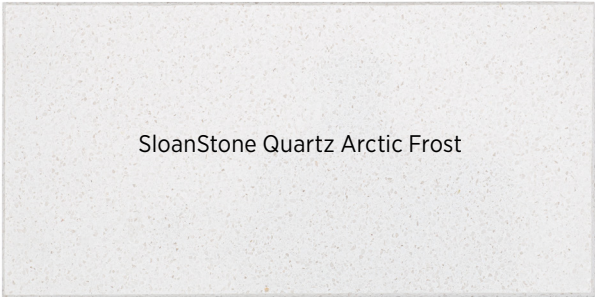
Engineered to perform

Our engineered SloanStone Quartz sink decks offer the perfect blend of beauty, durability, and cost-effectiveness. These molded decks feature a seamless, non-porous construction that makes for an extremely scratch and stain-resistant, hygienic, and easy-to-maintain surface. With three distinct colors to choose from, you can add style and the industry-leading performance of SloanStone Quartz sink decks to your next commercial project.

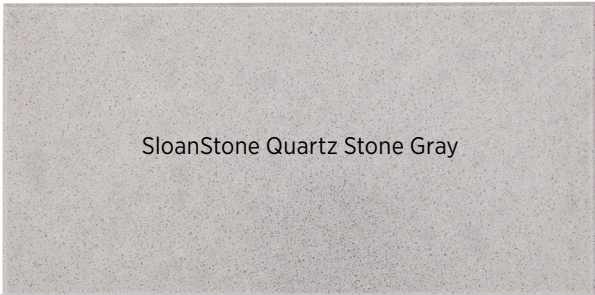
- Available for SloanStone Arrowhead and Gradient style sinks
- Industry-leading minimum of 85% quartz per deck
- Stain, scratch, abrasion, and impact resistant
- Heat and rapid temperature fluctuation resistant
- Cost-effective alternative to solid surface and fabricated quartz
- GreenGuard Gold Certified



SloanStone Quartz Coast Carrara



SloanStone Quartz Arctic Frost



SloanStone Quartz Stone Gray

Two sink styles

SloanStone Arrowhead is a unique and modern design that comes to a slight point with an open front edge. SloanStone Gradient is a contemporary design that brings a strong visual presence with a clean form and dramatically angled basin.



Drain finishes

Match your drain to your fixtures with the DS-57A ProDrain Grid Strainer, compatible with SloanStone Quartz QSA and QSGR Sink Models and available in Polished Chrome, Brushed Stainless, Polished Brass, Brushed Nickel, and Graphite

Fixture finishes

Many faucets and soap dispensers are available in our unique finishes.



Polished Chrome



Brushed Stainless



Polished Brass



Brushed Brass (coming soon)



Brushed Nickel



Graphite

Arrowhead QSA Series



- Available in 1 and 2 stations
- Faucet and soap dispenser options available
- Wall-mounted bracket option available
- Also available in SloanStone Solid Surface

Shown with wall-mounted angled stainless enclosure and Combination ESD-411 (EBF-415 Faucet and ESD-410 Soap Dispenser)

Gradient QSGR Series



- Available in 1 and 2 stations
- Faucet and soap dispenser options available
- Wall-mounted bracket option available
- Also available in SloanStone Solid Surface

Shown with wall-mounted angled stainless enclosure and Combination ESD-421 (EBF-425 Faucet and ESD-420 Soap Dispenser)



SloanStone Quartz Arrowhead Sink QSA-82000 in SloanStone Quartz Arctic Frost and angled stainless steel enclosure shown with ESD-801 Combo (Optima EBF-85 Faucet and Sloan ESD-800 Soap Dispenser).



SloanStone Solid Surface ELC-82000 Deluxe Lavatory Countertop Sink in SloanStone Solid Surface Fog with integrated stainless steel enclosure shown with Optima® EAF-275-ISM Faucet in Brushed Stainless.

SloanStone Solid Surface Sinks



Drain finishes

Match your drain to your fixtures with the DS-57A ProDrain Grid Strainer, compatible with SloanStone Solid Surface ELGR, ELA, ELWF and ELRF Sink Models and available in Polished Chrome, Brushed Stainless, Polished Brass, Brushed Nickel, and Graphite.

Low-maintenance sinks for high-traffic settings

Schools. Office buildings. Airports. Stadiums. Wherever lots of people get together, restrooms have to be ultra-rugged and easy to maintain.

SloanStone Solid Surface use a molded, non-porous solid surface material that eliminates all adhesives and sealants for tough durability and easy repairs.

SloanStone Solid Surface are built with these features:

- **Easy-access components.** All serviceable components, including electronics, can be easily accessed. Some models can even be accessed above deck.
- **Vandal resistance.** Each design provides a level of vandal resistance, from easily cleaned surfaces to integrated faucets and locked access to components.

Pair many SloanStone Solid Surface with Sloan faucets and soap dispensers. Select models available in special finishes.

See all fourteen different designs and up to 25 color options at sloan.com/sloanstone-solid-surface

Round Front

ELRF Series



- Available in 1, 2, 3, and 4 stations
- Faucet and soap dispenser options available
- With Angle bracket or angled stainless enclosure mounting options

Shown with ESD-1501 Combination (EAF-150 Faucet and ESD-1500 Soap Dispenser)

Arrowhead

ELA Series

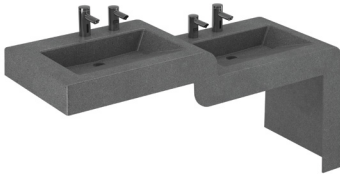


- Available in 1, 2, 3, and 4 stations
- Faucet and soap dispenser options available
- Also available in SloanStone Quartz
- With Angle bracket or angled stainless enclosure mounting options

Shown with ESD-501 Combination (EFX-250 Faucet and ESD-500 Soap Dispenser)

Waterfall

ELWF Series

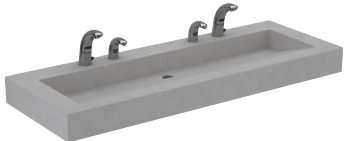


- Available in 2, 3, and 4 stations
- Faucet and soap dispenser options available
- With Angle bracket mounting option

Shown with Combination ESD-2001 (EAF-275 Faucet and ESD-2000 Soap Dispenser)

Gradient

ELGR Series

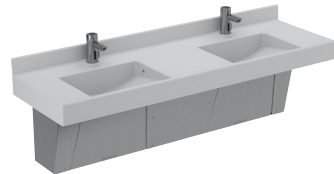


- Available in 1, 2, 3, and 4 stations
- Faucet and soap dispenser options available
- Also available in SloanStone Quartz
- With Angle bracket or angled stainless enclosure mounting options

Shown with ESD-1501 Combination (EAF-150 Faucet and ESD-1500 Soap Dispenser)

Electronic Lavatory Countertop

ELC 80000 Series



- Available in 1, 2, and 3 stations
- Faucet options available
- With Integrated angled stainless enclosure

Shown with EAF-200 Faucet

ELC 40000/70000 Series



- Available in 1, 2, 3, and 4 stations
- Faucet and soap dispenser options available
- With Angle bracket mounting option

ELC-40000 shown with ESD-701 Combination (EAF-750 Faucet and ESD-700 Soap Dispenser)

Electronic Washstation

EW 40000, 60000, 70000 Series



- Available in 2 and 3 stations
- Integrated soap dispenser option available
- With Integrated plastic covered enclosure

EW-70000 shown with integrated faucet and soap dispenser

Electronic Lavatory System

ELS 40000, 60000, 70000 Series



- Available in 1, 2, and 3 stations
- Faucet and soap dispenser options available
- With Integrated plastic covered enclosure

ELS-70000 shown with EAF-300 Faucet and ESD-600 Soap Dispenser

Electronic Washstation Fountain

ELWF Series



- Available in 2, 3, and 4 stations
- Integrated soap dispenser option available
- With Integrated solid surface covered enclosure

Shown with integrated faucet



Ledgeback Wall-hung lavatory SS-3106 shown with EFX-177 Faucet accompanied with Sloan 24x36 inch Framed Mirrors in Polished Chrome

Promoting hygiene with functional elegance

Sloan vitreous china sinks are available for wall-hung or countertop installation. They are perfect for any application—from executive restrooms to schools, entertainment venues, transportation centers, or government buildings.

Options include a backsplash, wheelchair access, and 4", 8", or single-hole centerset punching. You can also add a ceramic shroud under the sink (select models) for a sleek, clean appearance.

All models are IAPMO tested and certified. Add our revolutionary SloanTec® Glaze to your sink to help keep it clean and looking great.

Pair your Vitreous China Sink with a Sloan faucet as well as matching soap dispenser (for 20" × 18" ledgeback or undermount lavatories only).

Wall-hung lavatories

Ledgeback
20" × 18" | 508 mm × 463 mm

Ledgeback
21" × 20" | 533 mm × 508 mm

With 4" backsplash
20" × 18" | 508 mm × 457 mm



SS-3106* Single Hole
SS-3006* 4" Centerset
SS-3806 8" Centerset

SS-3165 Single Hole
SS-3065 4" Centerset
Optional SS-27-A shroud available

SS-3103 Single Hole
SS-3003 4" Centerset
SS-3803 8" Centerset

Optional SS-27-A Shroud available
*LH & RH soap holes also

Undermount lavatories

20" × 18" | 508 mm × 457 mm

22" × 16" | 559 mm × 406 mm



SS-3001

SS-3021

SS-3802 8" Centerset

Drop-in lavatory

20" × 17" | 508 mm × 432 mm



SloanTec® Hydrophobic Glaze

SloanTec is a unique and proprietary glaze that imparts permanent hydrophobic (water-repellent) and oleophobic (oil- repellent) properties to vitreous china.

This permanent glaze is unaffected by typical scratches that occur over time and can be observed by measuring the contact angle of a droplet of water. In addition, all fixtures with SloanTec Glaze are Buy American Act (BAA) compliant.



Deluxe Stainless Steel ESS-3300 Sink shown with integrated gooseneck surgical bend faucet and knee-activated soap dispenser.

Uncompromising options

Sloan hands-free **stainless steel handwashing and scrub sinks** are ideal for healthcare applications when you need the highest level of handwashing hygiene.

Sloan’s **scrub sink** features front-of sink body sensors designed to maintain faucet flow while a surgical scrub is performed as well as knee-activated soap dispensers for ease of use.

Stainless Steel Sinks

Hygienic, touch-free, and tough

Built from 14 gauge type 304 stainless steel, these sinks endure the harshest working environments with minimal maintenance. And for ultimate hygiene, touch-free faucets and soap dispensers combine with a sink design that’s ideal for complete washdowns.

Our stainless sink systems also include:

- Pre-plumbing and pre-assembly for easy installation
- Lift-out front panels for easy maintenance
- Sound-softening inside panels

Sloan stainless sink systems are available in 1, 2, and 3 station configurations to accommodate every setting.

Scrub Sink

ESS 2000 Series



- Available in 1, 2, and 3 stations
- Integrated faucet
- Includes integrated stainless enclosure

Handwashing Sink

EHS-1000



- Available in 1 station
- Faucet options available
- Includes integrated stainless enclosure

Shown with SF-2200 Faucet

Deluxe Scrub Sink

ESS 3000 Series



- Available in 1, 2, and 3 stations
- Integrated faucet and soap dispenser
- With knee activated soap dispenser
- Includes integrated stainless enclosure



Front cover: AER-DEC Integrated Sink AD-82000 in Silestone® Iconic White with Clark Street® fixtures in Brushed Brass and laminated vertical cabinet style enclosure with Wilsonart® Black Hills Oak accompanied with Sloan 24×36 inch Inset LED Mirrors.

Back cover: SloanStone® Quartz Arrowhead Sink QSA-81000 in SloanStone Quartz Coast Carrara shown with angled brackets and ESD-411 Combo (EBF-410 Faucet and Sloan ESD-410 Soap Dispenser) in Graphite.

World Headquarters

10500 Seymour Avenue
Franklin Park, IL 60131
U.S.A.

800.982.5839
sloan.com

©2023 Sloan Valve Company.
All Rights Reserved.

Follow Sloan

in /sloan-valve-company

f /sloanvalvecompany

@ @sloan

@ @sloanvalve

X @sloan_valve

p /sloanvalve