

## CODE NUMBER

10001406

## DESCRIPTION

SU-1009 Urinal and GEM-2 186 SFSM Flushometer.

## COMPONENTS

- Flushometer: Code 3072622
- Urinal: Code 1101009

## DETAILS

- Flush Volume: 0.125 gpf (0.5 Lpf)
- Nominal Dimensions: 14 ¼" x 17 ¼" x 25 ½" (362 x 438 x 648mm)

## FLUSHOMETER FEATURES

- Fixed Volume Piston with Filtered O-ring Bypass
- Four (4) size C batteries included
- "Low Battery" Flashing LED
- "User in View" Flashing LED
- No External Volume Adjustment to Ensure Water Conservation
- True Mechanical Override Flush Button
- 72-Hour Sentinel Flush
- Sweat Solder Adapter w/Cover Tube and Cast Wall Flange with Set Screw
- Packing, Stop Seat and Vacuum Breaker Molded from PERMEX® Rubber Compound for Chloramine resistance
- 3/4" IPS screwdriver Bak-Chek® angle stop with vandal resistant stop cap

## FIXTURE FEATURES

- White Vitreous China
- Washdown flushing action
- Integral flushing rim
- ¾" I.P.S. top spud inlet
- 2" NPT outlet flange
- Vandal resistant strainer assembly included
- All mounting hardware included
- 100% factory flush tested



## COMPLIANCES & CERTIFICATIONS



(ADA Compliant, BAA Compliant, CalGreen Compliant, CEC Compliant, cUPC Green Certified, EPD, HPD, Satisfies LEED Credits, WaterSense Listed, WELL Building Standard)

## DOWNLOADS

- [Standard Spud Urinal Installation Instructions](#)
- [GEM/GEM 2 Piston Type Exposed Installation Instructions](#)
- [EBV-500/550-A Installation Instructions](#)
- [SS/ST/SU/WETS/WEUS Fixtures Repair and Maintenance Guide](#)
- [EBV500/EBV550 Repair and Maintenance Guide](#)
- [Gem 2 Repair and Maintenance Guide](#)
- [Additional Downloads](#)

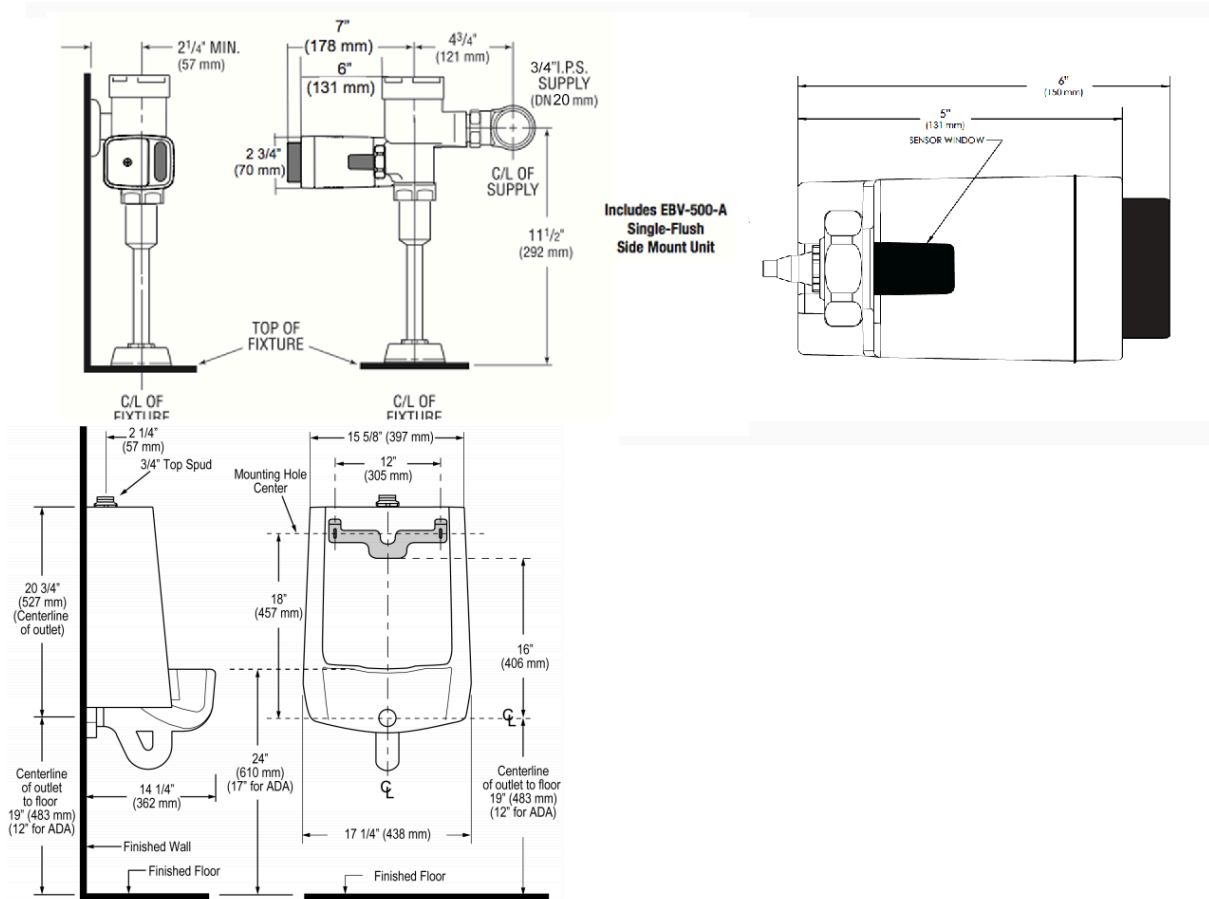
## NOTES

All information contained within this document subject to change without notice.

## WARRANTY

[View Warranty Information](#)

**ROUGH-IN**



NOTE: ADA urinal rim height requirements allow all heights 17" and below. Sloan strongly recommends roughing in the drain to achieve a 16 1/2" rim height or less to ensure compliance.