

CODE NUMBER

1101015

DESCRIPTION

Vitreous China Washdown Urinal.

DETAILS

- Flush Volume: 0.5 gpf (1.9 Lpf)
- Flush volume determined by the flushometer used with the fixture
- Nominal Dimensions: 14 1/4" x 17 1/4" x 25 1/2" (362 x 438 x 648mm)

FEATURES

• Washdown Urinal shall be made of vitreous china with a 3/4" rear spud. Urinal shall be wall mounted. Urinal shall include a removable strainer, inlet spud and hanger. Urinal shall use 0.5 gpf / 1.9 Lpf. Urinal shall be Sloan Model SU-1015-0.5.

- White Vitreous China
- Wall mounted
- Washdown flushing action
- 3/4" rear spud inlet
- 100% factory flush tested
- Integral flushing rim
- All mounting hardware included
- Carrier not included

DOWNLOADS

- [Standard Spud Urinal Installation Instructions](#)
- [SS/ST/SU/WETS/WEUS Fixtures Repair and Maintenance Guide](#)


COMPLIANCES & CERTIFICATIONS


(ADA Compliant, cUPC Green Certified, EPD, HPD, WaterSense Listed)

NOTES

All information contained within this document subject to change without notice.

All vitreous china dimensions shown in these drawings are nominal and not to scale. Dimensions can vary within the tolerances established in the governing ASME A112.19.2/CSA B45.1 standard. It is important to consider this when planning rough-in and plumbing layouts.

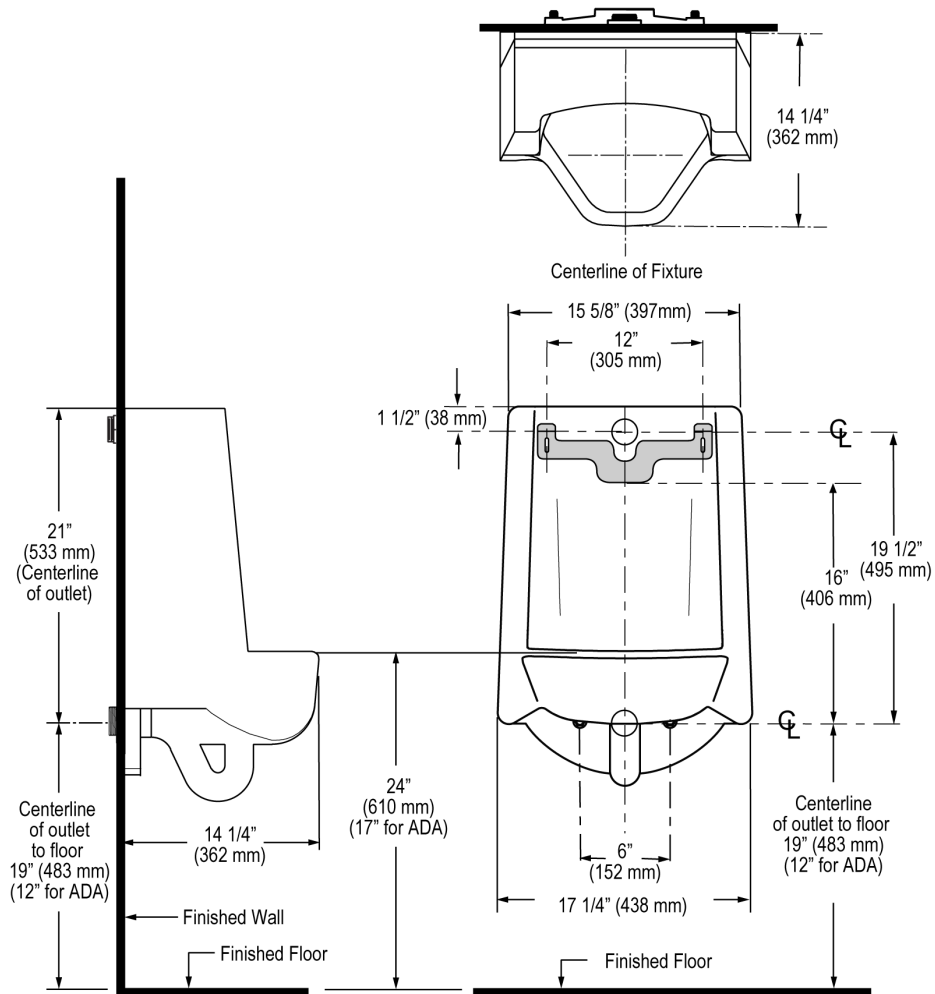
WaterSense compliant when used with a WaterSense compliant flushometer.

[Find a compatible flushometer](#) for this urinal.

WARRANTY

[View Warranty Information](#)

ROUGH-IN



NOTE: ADA urinal rim height requirements allow all heights 17" and below. Sloan strongly recommends roughing in the drain to achieve a 16½" rim height or less to ensure compliance.