

DESCRIPTION

Designer Series™ 2-Station Wall-Mounted Open Front Sink.

DETAILS

- Material: Corian or Quartz
- Width: 60" (1,524mm)

FEATURES


Two Station Lavatory System with the following features:

- Dimensions: 60" x 22" x 5"
- A monolithic console available in Corian or quartz
- ADA compliant if Installed properly
- Multiple mounting options
- Basins can be sized to project requirements
- Many customization options - see architectural worksheet for all options
- Easy installation
- Pairs great with Sloan faucets and soap dispensers


COLORS

- For a complete list of Corian® colors:
<http://www.corian.com/colors-of-corian-r->
- For a complete list of Corian® quartz colors:
<https://www.corianquartz.com/colors-of-quartz->

SUGGESTED FAUCETS

	Name	Description
	EBF-85	View more info

SUGGESTED SOAP DISPENSERS

	Name	Description
	ESD-800	View more info

VIDEOS

-  Sink Configurator

**COMPLIANCES & CERTIFICATIONS**

IGC156

(ADA Compliant, BAA Compliant, cUPC Certified, IGC156)

RECOMMENDED SPECIFICATION

Sloan Designer Series Sink model no. DSOF 8X000 Open Front Style Sink. Product to be fabricated out of Corian or quartz. Sloan automated sensor faucet. Sloan sensor operated foam soap dispenser. Sink design to be ADA compliant. Supplied with angle brackets or enclosure.

DOWNLOADS

- [DSOF-80000 Installation Instructions](#)
- [Additional Downloads](#)

NOTES

All information contained within this document subject to change without notice.

Many customization options - see [architectural worksheet](#) for all options

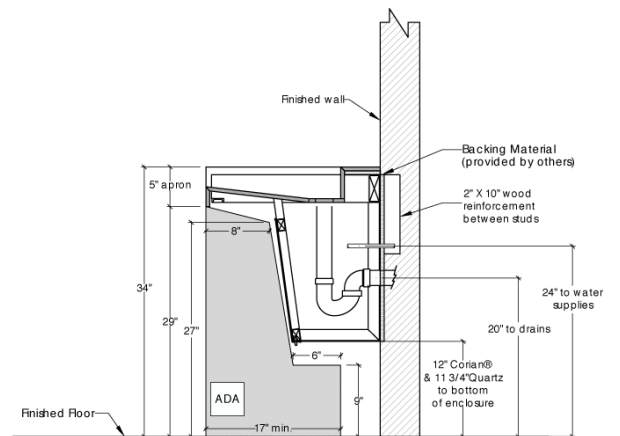
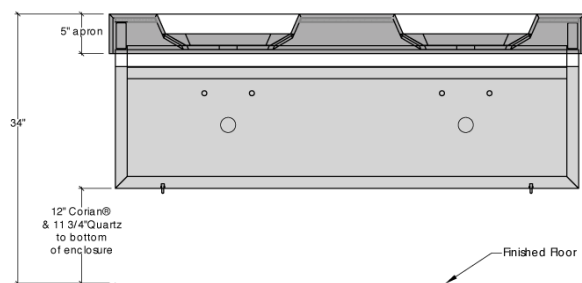
[Find a compatible faucet](#) for this sink.

[Find a matching soap dispenser](#) for this sink.

WARRANTY

[View Warranty Information](#)

Technical drawing of a double-basin stainless steel sink. The drawing shows a top-down view of the sink with two basins. The overall width is 60" and the depth is 22". The mounting flange has a total width of 34". The distance between the centers of the two basins is 13". The mounting holes are 6" typical (typ.) apart. The faucet hole is Ø1 1/4" typical (typ.) and the soap hole is Ø1" typical (typ.).



Page 2 of 2