

**DESCRIPTION**

Sustainable Bio Deck 1-Station Wall-Mounted Sink.

**DETAILS**

- Material: Renewable
- Width: 31" (787mm)

**FEATURES**

One Station Lavatory System with the following features:

- Dimensions: 30" x 22" x 5"
- A Monolithic deck constructed with biobased materials
- Available in 4 colors
- Multiple Mounting Options
- Pairs great with Sloan faucets and soap dispensers

**COLORS**

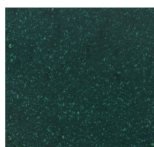
Corn Cob (CC)



Rustic Maple (RM)






Grey (G)



Jade Green (JG)

**SUGGESTED FAUCETS**

	Name	Description
	EAF-250	<a href="#">View more info</a>
	EAF-225	<a href="#">View more info</a>
	EAF-275	<a href="#">View more info</a>

**COMPLIANCES & CERTIFICATIONS**

IGC156

(ADA Compliant, cUPC Certified, IGC156)

**RECOMMENDED SPECIFICATION**

Sloan Bio Deck Series Sink model no. ELB 5X000. Product to be fabricated out of bio based material with soy based resin and vitreous china undermount bowls. Sloan automated sensor faucet. Sloan sensor operated foam soap dispenser. Sink design to be ADA compliant. Supplied with angle brackets or enclosure.

**DOWNLOADS**

- [ELB/ELC Installation Instructions](#)

**NOTES**

All information contained within this document subject to change without notice.

[Find a compatible faucet](#) for this sink.

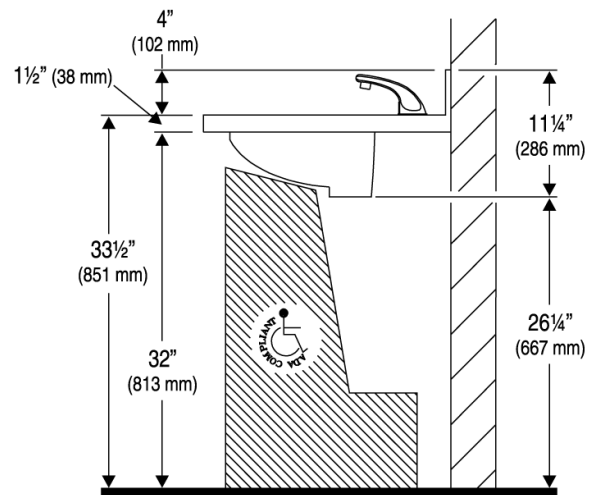
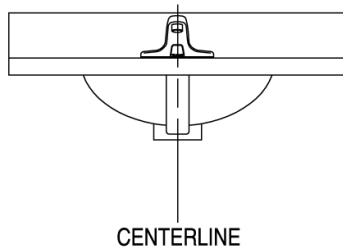
[Find a matching soap dispenser](#) for this sink.

**WARRANTY**

[View Warranty Information](#)

Technical drawing of a wall-mounted urinal. The drawing shows the urinal mounted on a wall. Key dimensions and labels include:

- FACE OF WALL**: Points to the wall surface.
- 22" (559 mm)**: Vertical dimension from the wall face to the centerline of the urinal.
- CENTERLINE**: A horizontal line passing through the center of the urinal.
- 15½" (394 mm)**: Horizontal dimension from the centerline to the left edge of the urinal.
- 15½" (394 mm)**: Horizontal dimension from the centerline to the right edge of the urinal.
- 31" (787 mm)**: Total horizontal dimension across the urinal.



Page 2 of 2