

## CODE NUMBER

23032002

## DESCRIPTION

ST-2309 Water Closet and ROYAL 111 Flushometer.

## COMPONENTS

- Flushometer: Code 3010000
- Water Closet: Code 2102309

## DETAILS

- Flush Volume: 1.6 gpf (6.0 Lpf)
- Nominal Dimensions: 27" x 13" x 10 ¾" (686 x 330 x 273mm)

## FLUSHOMETER FEATURES

- PERMEX® Synthetic Rubber Diaphragm with Dual Filtered Fixed Bypass
- High Back Pressure Vacuum Breaker Flush Connection with One-piece Bottom Hex Coupling Nut
- Sweat Solder Adapter with Cover Tube & Cast Wall Flange with Set Screw
- Non-Hold-Open Handle, Fixed Metering Bypass and No External Volume Adjustment to Ensure Water Conservation
- Diaphragm, Handle Packing and Vacuum Breaker to be molded from PERMEX® Rubber Compound for Chloramine Resistance
- Adjustable Tailpiece
- ADA Compliant Metal Oscillating Non-Hold-Open Handle
- 1" I.P.S. Screwdriver Bak-Chek® Angle Stop with Free Spinning Vandal Resistant Stop Cap

## FIXTURE FEATURES

- White Vitreous China
- Floor mounted, floor outlet
- 10¾" rim height for toddlers
- Water spot area: 9½" x 9¼" (24 cm x 23 cm)
- 1½" I.P.S. top spud inlet
- 2⅞" fully glazed trapway
- Closet bolts and caps included
- Toilet seat not included
- Static load rating of 1000 lbs. (See Notes)



## COMPLIANCES & CERTIFICATIONS



(ADA Compliant, BAA Compliant, CalGreen Compliant, CEC Compliant, cUPC Certified, cUPC Green Certified, EPD, HPD, Satisfies LEED Credits, WaterSense Listed, WELL Building Standard)

## DOWNLOADS

- [Royal Exposed Installation Instructions](#)
- [ST 2309 Top Spud Junior Installation Instructions](#)
- [Additional Downloads](#)

## NOTES

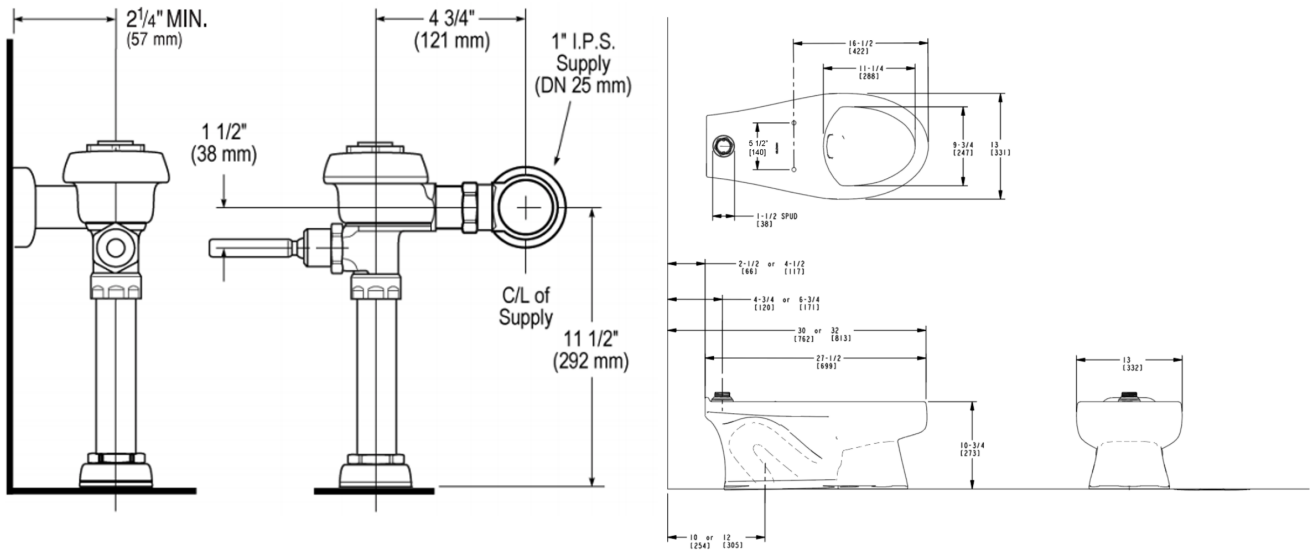
All information contained within this document subject to change without notice.

Static load tested according to the procedure outlined in Section 6.7 of ASME A112.19.2. Not recommended for bariatric use.

## WARRANTY

[View Warranty Information](#)

**ROUGH-IN**



Sloan 10500 Seymour Ave, Franklin Park, IL 60131  
Phone: 800.982.5839 • Fax: 800.447.8329 • [sloan.com](http://sloan.com)