

**CODE NUMBER**

3325500

**DESCRIPTION**

Polished Chrome Finish, Fixture Connection Top Spud, Single Flush, Battery, Infrared, Exposed Sensor Urinal/Water Closet Retrofit Flushometer.

**DETAILS**

- Finish: Polished Chrome (CP)
- Power Type: Battery
- Valve: Diaphragm/Piston
- Fixture Type: Urinal/Water Closet
- Fixture Connection: Top Spud

**FEATURES**

- ADA Compliant Battery powered infrared side mount sensor for automatic "No Hands" operation
- Four (4) size C batteries included
- Non-Hold-Open True Mechanical Override Full Flush Button
- "Low Battery" Flashing LED
- "User in View" Flashing LED
- 72-Hour Sentinel Flush
- Estimated battery life - 3 years at 4000 cycles per month
- Sensor with Automatic Range Adjustment


**COMPLIANCES & CERTIFICATIONS**


(ADA Compliant, BREEAM Water Credit, cUPC Certified, Green Globes Water Credit)

**ELECTRICAL SPECIFICATIONS**

- Arming Delay: 1-3 seconds
- Control Circuit: 6 VDC Input/72 Hour Sentinel Flush/Solid State
- Sensor Range: 22" - 42" (559-1,067mm)

**VALVE OPERATING PRESSURE (FLOWING)**

15-80 PSI (103-552 kPa). Specific fixtures may require greater minimum flowing pressure - consult manufacturer requirements.

**DOWNLOADS**

- [EBV-500/550-A Installation Instructions](#)
- [EBV500/EBV550 Repair and Maintenance Guide](#)
- [Additional Downloads](#)

**NOTES**

All information contained within this document subject to change without notice.

Looking for other variations of the EBV500A product? [View the general spec sheet with all options.](#)

[Find a compatible urinal](#) for this flushometer.

[Find a compatible water closet](#) for this flushometer.

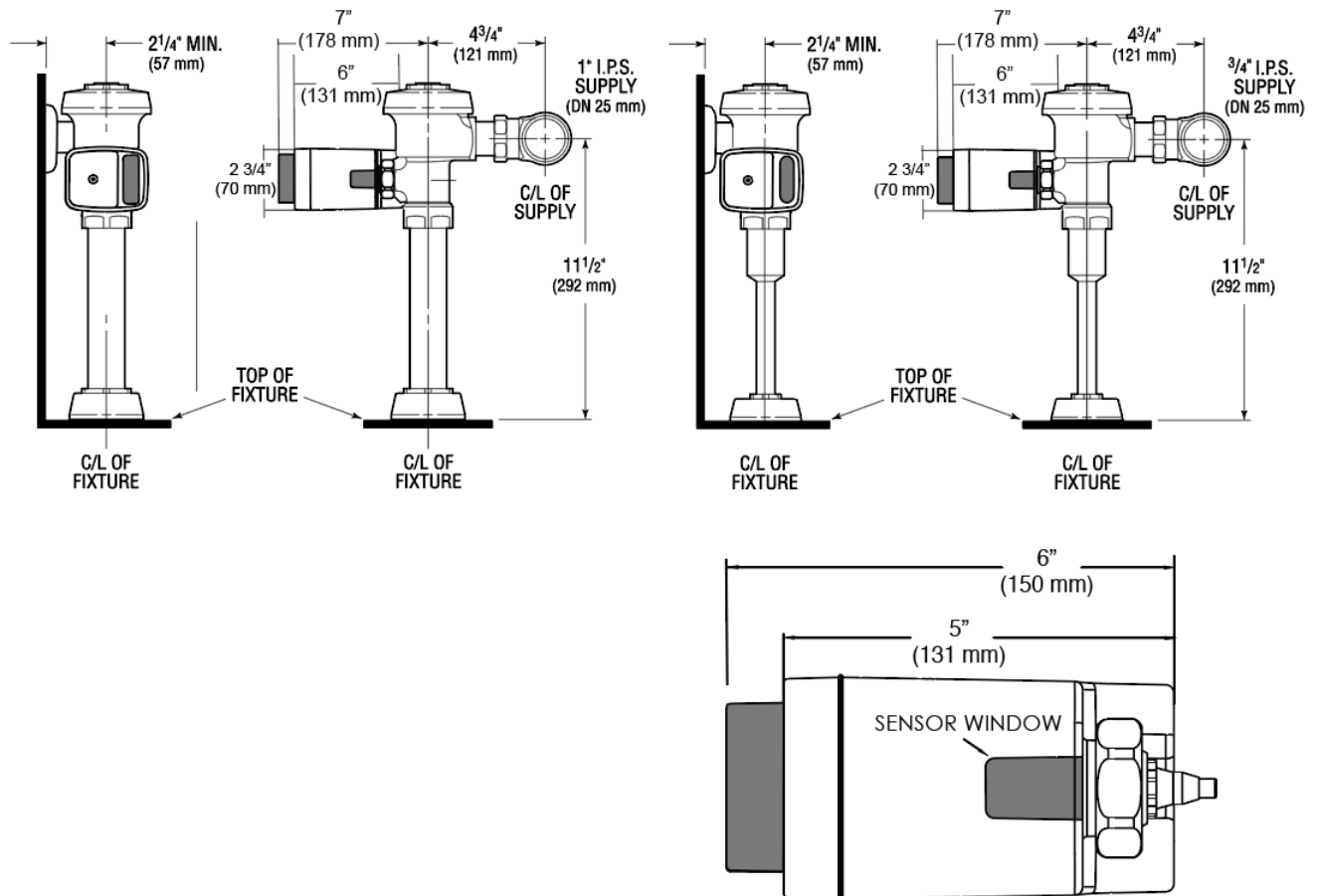
**WARRANTY**

[View Warranty Information](#)

**Sloan 10500 Seymour Ave, Franklin Park, IL 60131**

Phone: 800.982.5839 • Fax: 800.447.8329 • [sloan.com](http://sloan.com)

**ROUGH-IN**



Sloan 10500 Seymour Ave, Franklin Park, IL 60131  
Phone: 800.982.5839 • Fax: 800.447.8329 • [sloan.com](http://sloan.com)