

CODE NUMBER

33660013

DESCRIPTION

Optima® Sensor-Operated Deck Hand Dryer EHD-420, HEPA110/120V

DETAILS

- Finish: Brushed Nickel (BN)
- Voltage: 110/120V
- Wattage: 60Hz
- Amperage: 20
- Dryer Operation Timeout: 30 seconds
- Mounting: Deck
- Power Type: Hardwired
- Depth: 6 ½" (165mm)
- Height: 5 ½" (140mm)
- Width: 1 ½" (38mm)

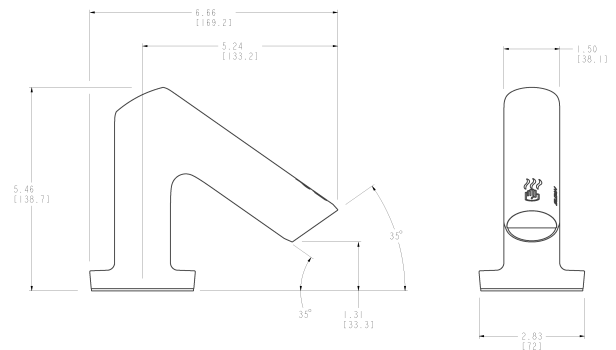
FEATURES

Deck Mounted PVD Brushed Nickel Dryer - Only Sold on AER-DEC® Sink:

- Note: Dryer can not be purchased on its own, must be on AER-DEC Sink
- 120V Dryer with US style, Plug Adapter
- Dryer comes standard with HEPA Filter to provide clean air
- Hand Dryer requires dedicated 20 Amp circuit for installation
- AER-DEC Sink Contains built-in, patented, air dam technology that eliminates backsplash and updrafts
- Many sink customization options - see Configurator.Sloan.com for all options
- Pairs great with Sloan Rush Street® faucets and soap dispensers

DOWNLOADS

- [EHD Deck Mounted Installation Instructions](#)
- [EHD Deck Mounted Repair and Maintenance Guide](#)
- [Additional Downloads](#)



COMPLIANCES & CERTIFICATIONS



(ADA Compliant, BAA Compliant, BABAA Compliant, cUL Certified, HEPA, Proposition 65, UL Certified)

RECOMMENDED SPECIFICATION

Sloan Rush St. Deck Mounted Hand Dryer model EHD-420. Product to have infrared sensor. Product must contain a HEPA filter and only be used on the AER-DEC sink basin with patented airdam technology. Dryer to be PVD Brushed Nickel finish. The product shall be tested and certified to industry standards including UL.

NOTES

All information contained within this document subject to change without notice.

WARRANTY

[View Warranty Information](#)

Sloan 10500 Seymour Ave, Franklin Park, IL 60131

Phone: 800.982.5839 • Fax: 800.447.8329 • sloan.com