

CODE NUMBER

3366127

DESCRIPTION

Sloan® XLERATOR® Sensor-Operated Wall Hand Dryer EHD-502, HEPA208/277V

DETAILS

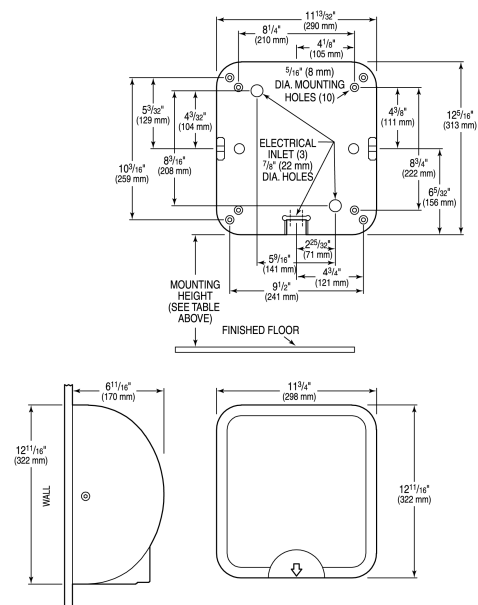
- Finish: Polished White (PW)
- Voltage: 208/277V
- Wattage: 50/60Hz
- Amperage: 5.6-6.2
- Mounting: Wall
- Power Type: Hardwired
- Depth: 12 86/125" (322mm)
- Height: 6 11/16" (170mm)
- Width: 11 3/4" (298mm)

FEATURES

- Series commutated, through-flow discharge, vacuum type motor/blower combination
- Infrared Optical Sensor with thirty-five (35) second lockout feature
- Air velocity of 16,000 LFM (linear feet per minute) at an outlet temperature of 135°F/57°C at a 72°F/22°C ambient room temperature
- Decibel Rating of 78-80 dB
- HEPA Filtration
- Adjustable speed, sound and heat control
- 8 second dry time
- Available in Polished White, Matte White, Polished Chrome, Brushed Nickel and Graphite
- Heating element constructed of Nichrome wire and protected by an automatic resetting thermostat
- One piece heavy-duty rib reinforced die cast zinc alloy housing
- Bright chrome plate or chip-proof electrostatically-applied epoxy finish
- Tamper-proof cover fasteners are included

DOWNLOADS

- [Sloan XLERATOR and Sloan XLERATOR Eco Hand Dryer Instructions](#)
- [Additional Downloads](#)



COMPLIANCES & CERTIFICATIONS



(BAA Compliant, BABAA Compliant, cUL Certified, EPD, HEPA, Proposition 65, UL Certified, WELL Building Standard)

RECOMMENDED SPECIFICATION

Sloan Xlerator Sensor Operated Hand Dryer. 208V/230V Polished White Finish.

NOTES

All information contained within this document subject to change without notice.

WARRANTY

[View Warranty Information](#)

Sloan 10500 Seymour Ave, Franklin Park, IL 60131

Phone: 800.982.5839 • Fax: 800.447.8329 • sloan.com