

CODE NUMBER

33700017

DESCRIPTION

1.28 gpf, SC Argus™ Pro Compatible, Dual-Filtered Fixed Bypass Diaphragm, Polished Chrome Finish, 1.5" Flush Connection, Fixture Connection Top Spud, Single Flush, Electrical Override, Solar, Infrared, 10.5" Vacuum Breaker, SOLIS® Exposed Sensor Water Closet Flushometer.

DETAILS

- Flush Volume: 1.28 gpf (4.8 Lpf)
- Finish: Polished Chrome (CP)
- Power Type: Solar
- Valve: Diaphragm
- Bypass: Dual-Filtered Fixed Bypass Diaphragm
- Valve Body Material: Semi-red Brass
- Fixture Type: Water Closet
- Fixture Connection: Top Spud
- Rough-In Dimension: 11 ½" (292mm)
- Spud Coupling: 1 ½" (38mm)
- Supply Pipe: 1" (25mm)
- Program: SC Argus™ Pro Compatible
- Override: Electrical
- Vacuum Breaker: 10.5"
- Flush Connection: 1.5"

FEATURES

- Wirelessly connects to Sloan's SC Argus Pro smart restroom system
- Standard operation when not connected to SC Argus Pro
- Solar Powered. Harvests power from artificial indoor light (incandescent, fluorescent or LED)
- User friendly three (3) second Flush Delay
- Sweat solder adapter with cover tube and cast wall flange with set screw
- Four (4) Size AA Battery Backup Power Source with "Low Battery" Flashing LED
- Infrared sensor with multiple-focused, lobular sensing fields for high and low target detection
- Fixed Metering Bypass and No External Volume Adjustment to Ensure Water Conservation
- Flex Tube Diaphragm designed for improved life and reduced maintenance
- Courtesy Flush® Override Button

IoT Smart Capabilities

- Provides detailed product information, image, model, total activations, total operating hours, room location, operating status and battery life
- Sends alarms and notifications to alert staff of potential issues and preventative maintenance
- Requires subscription to SC Argus Pro for remote management and monitoring, reports and smart features


COMPLIANCES & CERTIFICATIONS


(ADA Compliant, BAA Compliant, BABAA Compliant, cUPC Green Certified, EPD, FCC Certified, HPD, LEED V4 Water Efficiency Credit, UPC Certified, WaterSense Listed)

RECOMMENDED SPECIFICATION

Valve Body, Cover, Tailpiece and Control Stop shall be in conformance with ASTM Alloy Classification for Semi-Red Brass. Valve shall be in compliance with the applicable sections of ASSE 1037 and ANSI/ASME 112.19.2.

BATTERY SPECIFICATIONS

| Usage | 4- AA Battery Service* Life | | | |
|-----------|-----------------------------|--------|-------|---------|
| | 24 yrs | 18 yrs | 9 yrs | 7.2 yrs |
| per month | 500 | 1,000 | 3,000 | 4,000 |
| per day | 25 | 50 | 150 | 200 |

* Service life varies according to actual usage & restroom conditions
Battery shelf life: Alkaline= ~10 years - Lithium= ~25 years

ELECTRICAL SPECIFICATIONS

- Arming Delay: 16 seconds
- Flush Delay: 3s

VALVE OPERATING PRESSURE (FLOWING)

15–80 PSI (103–552 kPa). Specific fixtures may require greater minimum flowing pressure - consult manufacturer requirements.

DOWNLOADS

- [Solis 8100 Series Installation Instructions](#)
- [Control Stop Repair and Maintenance Guide](#)
- [Flush Connections Flanges Repair and Maintenance Guide](#)
- [Tail Piece Repair and Maintenance Guide](#)
- [Exposed Solis Repair and Maintenance Guide](#)

Sloan 10500 Seymour Ave, Franklin Park, IL 60131

Phone: 800.982.5839 • Fax: 800.447.8329 • sloan.com

VIDEOS

- PVD Special Finishes
- SC Argus™ Pro

- [Flushometer Pressure gauges](#)
- [Additional Downloads](#)

NOTES

All information contained within this document subject to change without notice.

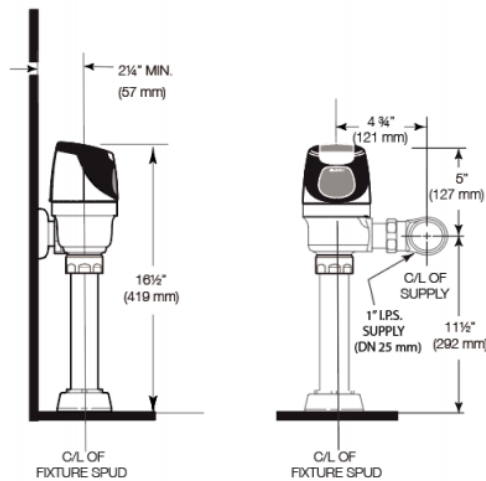
Looking for other variations of the SOLIS 8111 SMT product?
[View the general spec sheet with all options.](#)

WaterSense compliant when used with a WaterSense compliant fixture

WARRANTY

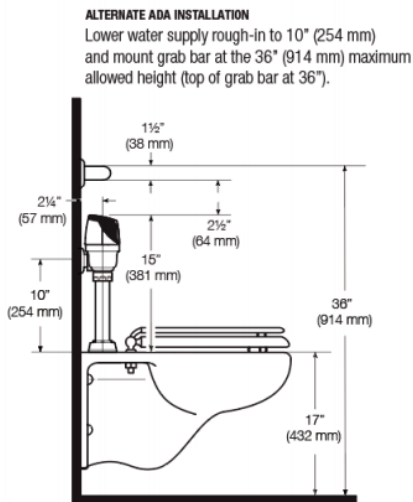
[View Warranty Information](#)

ROUGH-IN



WHEN INSTALLING IN A HANDICAP STALL:

Per the ADA Guidelines (section 604.9.4)
 It is recommended that the grab bars be split or shifted to the wide side of the stall.
 If grab bars must be present over the valve,
 use the alternate ADA installation as shown to the right.



Sloan 10500 Seymour Ave, Franklin Park, IL 60131

Phone: 800.982.5839 • Fax: 800.447.8329 • sloan.com