

CODE NUMBER

3375089

DESCRIPTION

PWT System 8-I/O Twisted Pair Controller, MCR-8012-A-003 HC Lav, WC

FEATURES

- PWT System eight input-output non-communicating, pre-programmed controller for two combination fixtures with hot/cold lavatory and water closets
- Adjustable lock-out time on water closets. Factory set for 1-hour lock-out time
- Use with PWT push buttons, electronic flushometers
- Potentiometer on PC Board allows for adjustment of run-times or lock-out times depending on program variation
- Input and output diagnostic LEDs give immediate information about service issues
- Lock-out indicator
- Easy access reset button
- Serial port for hand-held connection to change settings in the field
- PC board conformably coated to resist moisture and dust
- Includes mounting hardware

Specifications

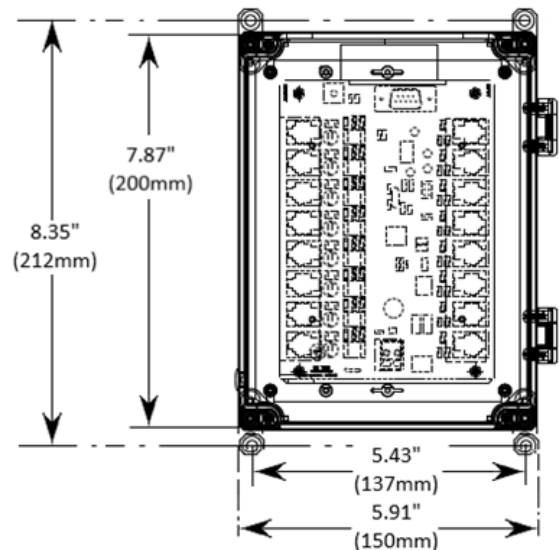
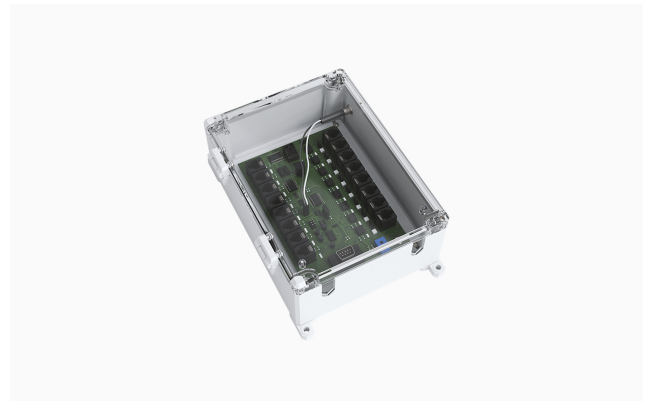
- IP53 Rated Hinged Enclosure
- RJ-11, 6 position, 4 pin connections for push buttons and solenoids
- Operates on 24 VAC-50/60 Hz
- Operating temperature: 0°C to 85°C
- Input (push button) voltage: 5 VDC
- Output (solenoid) voltage: 24 VAC
- Can be installed up to 200 feet away from 24 VAC power supply

Dimensions

- Box: 5.91" x 7.87" (150mm x 200mm)
- Distance between vertical mounting holes: 8.35" (212 mm)
- Distance between width mounting holes: 5.43" (137mm)

NOTES

All information contained within this document subject to change without notice.



DOWNLOADS

- [PWT MCR-4014 / MCR-8012 Controller Installation Instructions](#)
- [Additional Downloads](#)

