

**CODE NUMBER**

33753012

**DESCRIPTION**

1.1 gpf, SC Argus™ Pro Compatible, Dual-Filtered Fixed Bypass Diaphragm, Polished Chrome Finish, Fixture Connection Top Spud, Single Flush, Electrical Override, Solar, Infrared, 10.5" Vacuum Breaker, SOLIS® Exposed Sensor Water Closet Retrofit Flushometer.

**DETAILS**

- Flush Volume: 1.1 gpf (4.2 Lpf)
- Finish: Polished Chrome (CP)
- Power Type: Solar
- Valve: Diaphragm
- Bypass: Dual-Filtered Fixed Bypass Diaphragm
- Fixture Type: Water Closet
- Fixture Connection: Top Spud
- Program: SC Argus™ Pro Compatible
- Override: Electrical
- Vacuum Breaker: 10.5"

**FEATURES**

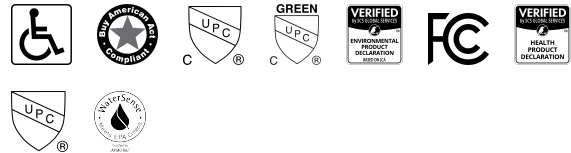
- Wirelessly connects to Sloan's SC Argus Pro smart restroom system
- Standard operation when not connected to SC Argus Pro
- Solar Powered. Harvests power from artificial indoor light (incandescent, fluorescent or LED)
- User friendly three (3) second Flush Delay
- Sweat solder adapter with cover tube and cast wall flange with set screw
- Four (4) Size AA Battery Backup Power Source with "Low Battery" Flashing LED
- Infrared sensor with multiple-focused, lobular sensing fields for high and low target detection
- Fixed Metering Bypass and No External Volume Adjustment to Ensure Water Conservation
- Flex Tube Diaphragm designed for improved life and reduced maintenance
- Courtesy Flush® Override Button
- 1.1 gpf (4.2 Lpf) flushometers are only recommended for new construction installations or those where sufficient drain line carry can be assured

**IoT Smart Capabilities**

- Provides detailed product information, image, model, total activations, total operating hours, room location, operating status and battery life
- Sends alarms and notifications to alert staff of potential issues and preventative maintenance
- Requires subscription to SC Argus Pro for remote management and monitoring, reports and smart features

**VIDEOS**


SC Argus™ Pro


**COMPLIANCES & CERTIFICATIONS**


(ADA Compliant, BAA Compliant, cUPC Certified, cUPC Green Certified, EPD, FCC Certified, HPD, UPC Certified, WaterSense Listed)

**ELECTRICAL SPECIFICATIONS**

- Arming Delay: 16 seconds
- Flush Delay: 3s

**VALVE OPERATING PRESSURE (FLOWING)**

15–80 PSI (103–552 kPa). Specific fixtures may require greater minimum flowing pressure - consult manufacturer requirements.

**DOWNLOADS**

- [Control Stop Repair and Maintenance Guide](#)
- [Flush Connections Flanges Repair and Maintenance Guide](#)
- [Tail Piece Repair and Maintenance Guide](#)
- [Exposed Solis Repair and Maintenance Guide](#)
- [Flushometer Pressure gauges](#)
- [Additional Downloads](#)

**NOTES**

All information contained within this document subject to change without notice.

Looking for other variations of the SOLIS RESS-C SMT product?  
[View the general spec sheet with all options.](#)

[Find a compatible urinal](#) for this flushometer.

[Find a compatible water closet](#) for this flushometer.

WaterSense compliant when used with a WaterSense compliant fixture

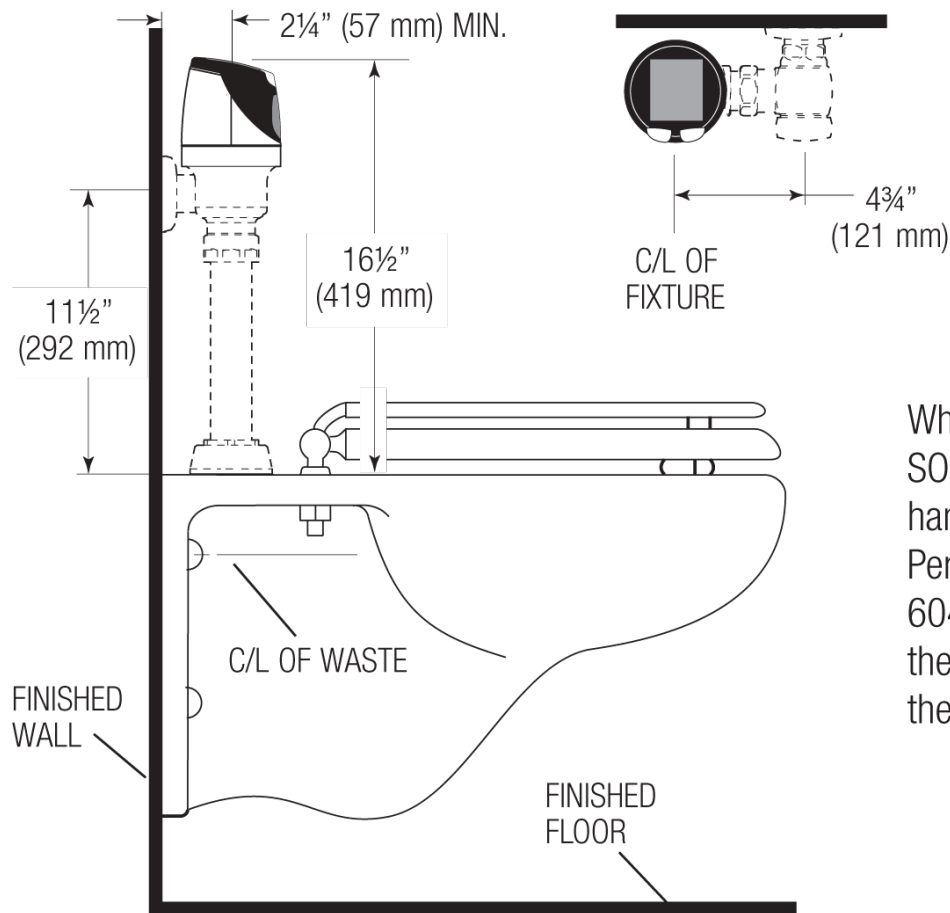
**WARRANTY**

[View Warranty Information](#)

**Sloan 10500 Seymour Ave, Franklin Park, IL 60131**

Phone: 800.982.5839 • Fax: 800.447.8329 • [sloan.com](http://sloan.com)

**ROUGH-IN**



When installing the Sloan SOLIS™ Flushometer in a handicap stall:  
Per the ADA Guidelines (section 604.9.4) it is recommended that the grab bars be split or shifted to the wide side of the stall.