

CODE NUMBER

33753013

DESCRIPTION

1.6 gpf, SC Argus™ Pro Compatible, Dual-Filtered Fixed Bypass Diaphragm, Polished Chrome Finish, Fixture Connection Top Spud, Single Flush, Electrical Override, Solar, Infrared, 10.5" Vacuum Breaker, SOLIS® Exposed Sensor Water Closet Retrofit Flushometer.

DETAILS

- Flush Volume: 1.6 gpf (6.0 Lpf)
- Finish: Polished Chrome (CP)
- Power Type: Solar
- Valve: Diaphragm
- Bypass: Dual-Filtered Fixed Bypass Diaphragm
- Fixture Type: Water Closet
- Fixture Connection: Top Spud
- Program: SC Argus™ Pro Compatible
- Override: Electrical
- Vacuum Breaker: 10.5"

FEATURES

- Wirelessly connects to Sloan's SC Argus Pro smart restroom system
- Standard operation when not connected to SC Argus Pro
- Solar Powered. Harvests power from artificial indoor light (incandescent, fluorescent or LED)
- User friendly three (3) second Flush Delay
- Sweat solder adapter with cover tube and cast wall flange with set screw
- Four (4) Size AA Battery Backup Power Source with "Low Battery" Flashing LED
- Infrared sensor with multiple-focused, lobular sensing fields for high and low target detection
- Fixed Metering Bypass and No External Volume Adjustment to Ensure Water Conservation
- Flex Tube Diaphragm designed for improved life and reduced maintenance
- Courtesy Flush® Override Button

IoT Smart Capabilities

- Provides detailed product information, image, model, total activations, total operating hours, room location, operating status and battery life
- Sends alarms and notifications to alert staff of potential issues and preventative maintenance
- Requires subscription to SC Argus Pro for remote management and monitoring, reports and smart features

VIDEOS


SC Argus™ Pro


COMPLIANCES & CERTIFICATIONS


(ADA Compliant, BAA Compliant, cUPC Certified, cUPC Green Certified, EPD, FCC Certified, HPD, UPC Certified)

ELECTRICAL SPECIFICATIONS

- Arming Delay: 16 seconds
- Flush Delay: 3s

VALVE OPERATING PRESSURE (FLOWING)

15–80 PSI (103–552 kPa). Specific fixtures may require greater minimum flowing pressure - consult manufacturer requirements.

DOWNLOADS

- [Control Stop Repair and Maintenance Guide](#)
- [Flush Connections Flanges Repair and Maintenance Guide](#)
- [Tail Piece Repair and Maintenance Guide](#)
- [Exposed Solis Repair and Maintenance Guide](#)
- [Flushometer Pressure gauges](#)
- [Additional Downloads](#)

NOTES

All information contained within this document subject to change without notice.

Looking for other variations of the SOLIS RESS-C SMT product?
[View the general spec sheet with all options.](#)

[Find a compatible urinal](#) for this flushometer.

[Find a compatible water closet](#) for this flushometer.

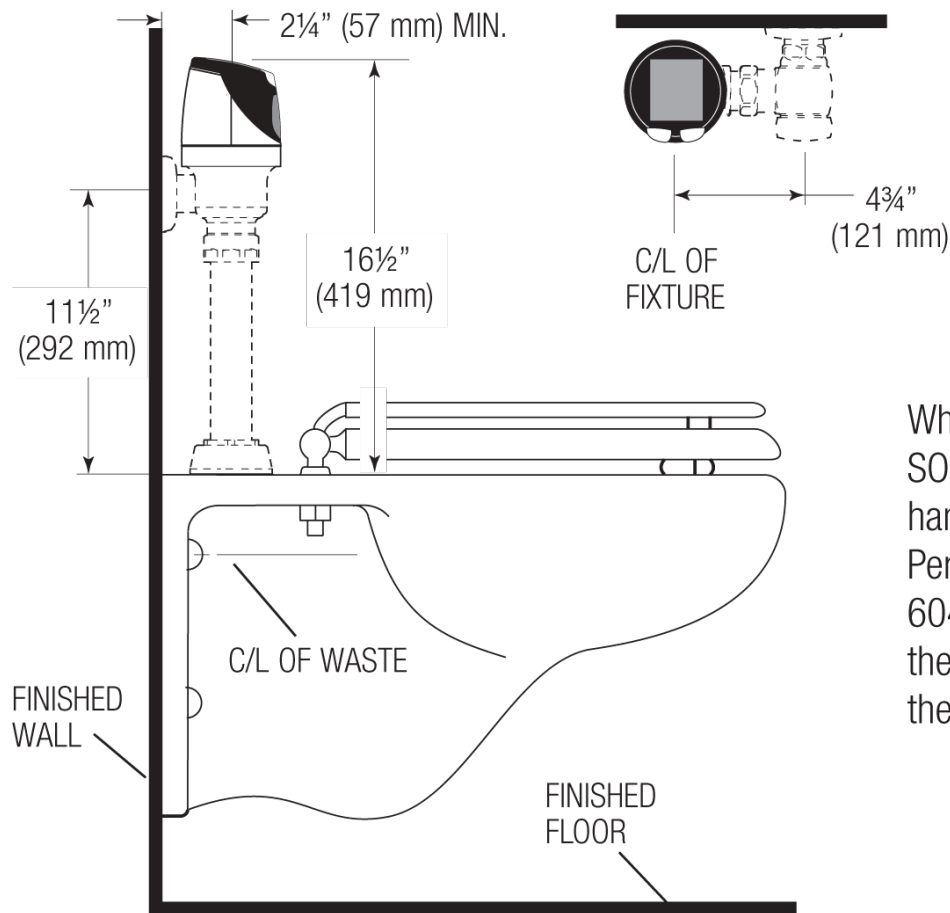
WARRANTY

[View Warranty Information](#)

Sloan 10500 Seymour Ave, Franklin Park, IL 60131

Phone: 800.982.5839 • Fax: 800.447.8329 • sloan.com

ROUGH-IN



When installing the Sloan SOLIS™ Flushometer in a handicap stall:
Per the ADA Guidelines (section 604.9.4) it is recommended that the grab bars be split or shifted to the wide side of the stall.