

CODE NUMBER

34003031

DESCRIPTION

1.28 gpf, Filtered, Polished Brass Finish, Fixture Connection Rear Spud, Single Flush, Integrated Control Stop, Adjustable Flush Connection Outlet Tube, Electrical Override, Battery with Hardwired Option, Sensor-Operated, Short V500A & Adjustable Flush Connection Vacuum Breaker, Front Accessible Wall Box, Floor-mounted, CX Concealed Sensor Floor-mounted Water Closet Flushometer.

DETAILS

- Flush Volume: 1.28 gpf (4.8 Lpf)
- Finish: Polished Brass (PB)
- Power Type: Battery with Hardwired Option
- Battery Life: 5 years
- Valve: Piston
- Bypass: Filtered
- Valve Body Material: Semi-red Brass
- Fixture Type: Water Closet
- Closet Mounting: Floor-mounted
- Fixture Connection: Rear Spud
- Override: Electrical
- Wall Box: Front Accessible
- Control Stop: Integrated
- Vacuum Breaker: Short V500A & Adjustable Flush Connection
- Outlet Tube: Adjustable Flush Connection

FEATURES

- Fixed volume piston with filtered O-ring bypass
- Front access wall plate requires no rear access plumbing chase
- Sensor activated, hands-free operation
- Battery operated with hardwired option
- Electronic override button
- Low battery indicator light
- Vandal resistant wall plate
- Adjustable flush connection
- Watersense compliant when used with a WaterSense compliant fixture
- 8 1/2"(W) x 9 1/4"(H) Wall Box Panel Dimension

VIDEOS

- ▶ CX Flushometer Product Video
- ▶ CX Flushometer - Sensor Installation
- ▶ CX Flushometer - Sensor Vacuum Service
- ▶ CX Flushometer - Sensor Piston Service
- ▶ CX Flushometer Product Video (Spanish)
- ▶ PVD Special Finishes


COMPLIANCES & CERTIFICATIONS


(ADA Compliant, BAA Compliant, cUPC Certified, EPD, HPD, LEED Materials & Resources EPD Credit, LEED Materials & Resources HPD Credit, WaterSense Listed, WELL Building Standard)

ELECTRICAL SPECIFICATIONS

- Arming Delay: 8 seconds
- Battery Life: 5 years
- Control Circuit: 6 VDC Input
- Flush Delay: 3s
- Self-Adaptive Window: ± 12
- Sensor Range: 22"-46" (559-1,168mm)
- Solenoid Operator: 6 VAC
- Transformers (specify separately):
 - EL-386 (Up to 1 flushometer)
 - EL-451 (up to 6 flushometers)

VALVE OPERATING PRESSURE (FLOWING)

20-80 PSI (138-552 kPa). Specific fixtures may require greater minimum flowing pressure - consult manufacturer requirements.

DOWNLOADS

- [CX 8158/8198 Installation Instructions](#)
- [CX 8158/8198 Repair and Maintenance Guide](#)
- [Additional Downloads](#)

NOTES

All information contained within this document subject to change without notice.

Looking for other variations of the CX 8154 product? [View the general spec sheet with all options.](#)

WaterSense compliant when used with a WaterSense

Sloan 10500 Seymour Ave, Franklin Park, IL 60131

Phone: 800.982.5839 • Fax: 800.447.8329 • sloan.com

compliant fixture

Battery life varies according to actual usage and restroom conditions.

WARRANTY

[View Warranty Information](#)

ROUGH-IN

**MODEL 8154
CLOSET
FLOOR MOUNT
REAR INLET**

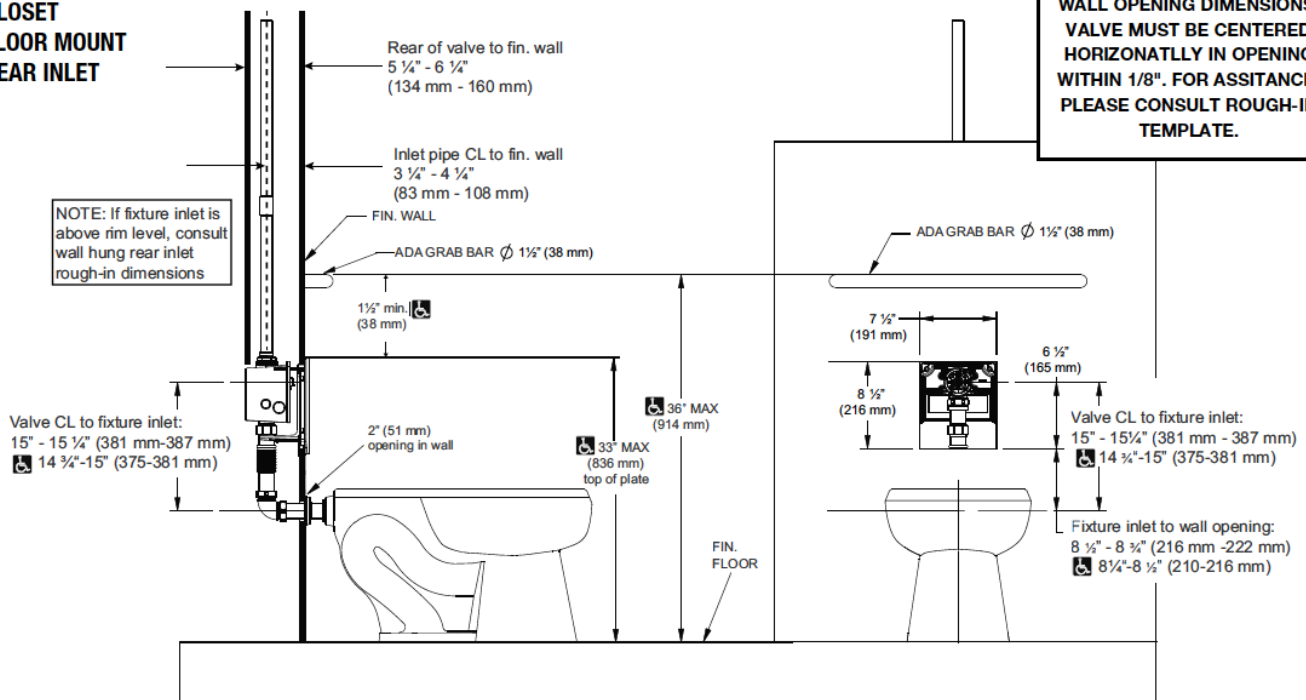
SIDE VIEW

FRONT VIEW

!!! IMPORTANT !!!

**ACCURACY IS IMPORTANT FOR
WALL OPENING DIMENSIONS.
VALVE MUST BE CENTERED
HORIZONTALLY IN OPENING
WITHIN 1/8". FOR ASSISTANCE,
PLEASE CONSULT ROUGH-IN
TEMPLATE.**

NOTE: If fixture inlet is
above rim level, consult
wall hung rear inlet
rough-in dimensions



Sloan 10500 Seymour Ave, Franklin Park, IL 60131

Phone: 800.982.5839 • Fax: 800.447.8329 • sloan.com