

## CODE NUMBER

3400337

## DESCRIPTION

1.28 gpf, Brushed Stainless Finish, Fixture Connection Rear Spud, Single Flush, Sensor-Operated, Short V500A & Adjustable Flush Connection Vacuum Breaker, Front Accessible Wall Box, Floor-mounted, CX Concealed Sensor Floor-mounted Water Closet Flushometer.

## DETAILS

- Flush Volume: 1.28 gpf (4.8 Lpf)
- Finish: Brushed Stainless (SF)
- Valve: Piston
- Valve Body Material: Semi-red Brass
- Fixture Type: Water Closet
- Closet Mounting: Floor-mounted
- Fixture Connection: Rear Spud
- Wall Box: Front Accessible
- Vacuum Breaker: Short V500A & Adjustable Flush Connection

## FEATURES

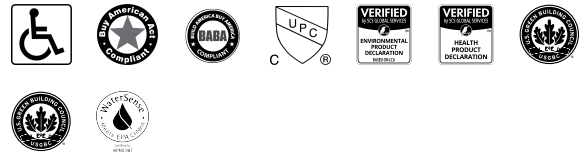
- Fixed volume piston with filtered O-ring bypass
- Front access wall plate requires no rear access plumbing chase
- Sensor activated, hands-free operation
- Battery operated with hardwired option
- Electronic override button
- Low battery indicator light
- Vandal resistant wall plate
- Adjustable flush connection

## VIDEOS

- ▶ CX Flushometer Product Video
- ▶ CX Flushometer - Sensor Installation
- ▶ CX Flushometer - Sensor Vacuum Service
- ▶ CX Flushometer - Sensor Piston Service
- ▶ CX Flushometer Product Video (Spanish)
- ▶ PVD Special Finishes



## COMPLIANCES & CERTIFICATIONS



(ADA Compliant, BAA Compliant, BABAA Compliant, cUPC Certified, EPD, HPD, LEED Materials & Resources EPD Credit, LEED Materials & Resources HPD Credit, WaterSense Listed)

## ELECTRICAL SPECIFICATIONS

- Self-Adaptive Window:  $\pm 12$
- Sensor Range: 22"–46" (559–1,168mm)
- Solenoid Operator: 6 VAC
- Transformers (specify separately):
  - EL-386 (Up to 1 flushometer)
  - EL-451 (up to 6 flushometers)

## DOWNLOADS

- [CX 8158/8198 Installation Instructions](#)
- [CX 8158/8198 Repair and Maintenance Guide](#)
- [Additional Downloads](#)

## NOTES

All information contained within this document subject to change without notice.

Looking for other variations of the CX 8154 product? [View the general spec sheet with all options.](#)

WaterSense compliant when used with a WaterSense compliant fixture

## WARRANTY

[View Warranty Information](#)

**Sloan 10500 Seymour Ave, Franklin Park, IL 60131**

Phone: 800.982.5839 • Fax: 800.447.8329 • [sloan.com](http://sloan.com)

**ROUGH-IN**

**MODEL 8154  
CLOSET  
FLOOR MOUNT  
REAR INLET**

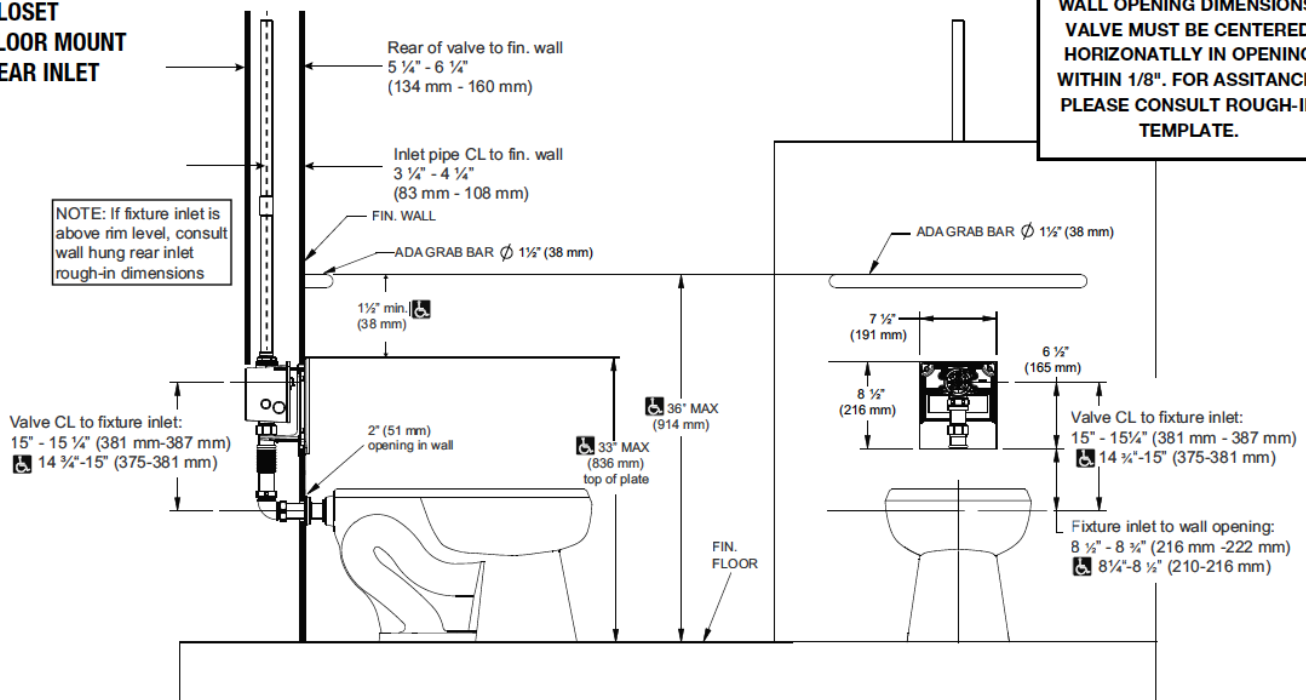
**SIDE VIEW**

**FRONT VIEW**

**!!! IMPORTANT !!!**

**ACCURACY IS IMPORTANT FOR  
WALL OPENING DIMENSIONS.  
VALVE MUST BE CENTERED  
HORIZONTALLY IN OPENING  
WITHIN 1/8". FOR ASSISTANCE,  
PLEASE CONSULT ROUGH-IN  
TEMPLATE.**

NOTE: If fixture inlet is  
above rim level, consult  
wall hung rear inlet  
rough-in dimensions



**Sloan 10500 Seymour Ave, Franklin Park, IL 60131**

Phone: 800.982.5839 • Fax: 800.447.8329 • [sloan.com](http://sloan.com)