

CODE NUMBER

3873003T

DESCRIPTION

Carbon Offset, Vitreous China Wall-Mounted Backsplash Lavatory.

DETAILS

- Centerset: 4"
- Nominal Dimensions: 18 ¼" × 20 ¾" × 12 ¼" (464 × 527 × 311mm)

FEATURES

- White, vitreous china wall hung lavatory with backsplash
- Great complement to all of Sloan's sensor faucet series
- Front overflow provides clean appearance
- Self-draining deck area with back and side splash shields
- All mounting hardware included
- IAPMO certified to meet or exceed ASME A112.19.2 standards
- Meets ADA guidelines and ANSI A117.1 requirements when installed accordingly

DOWNLOADS

- [Sloan SS-3003 Installation Instructions](#)
- [SS/ST/SU/WETS/WEUS Fixtures Repair and Maintenance Guide](#)
- [Vitreous China Lavatories Repair and Maintenance Guide](#)
- [Additional Downloads](#)



COMPLIANCES & CERTIFICATIONS



(ADA Compliant, BREEAM Materials Credit, Carbon Neutral, Carbon Offset, cUPC Certified, EPD, HPD, LEED Materials & Resources EPD Credit, LEED Materials & Resources HPD Credit, Satisfies LEED Credits, UPC Certified)

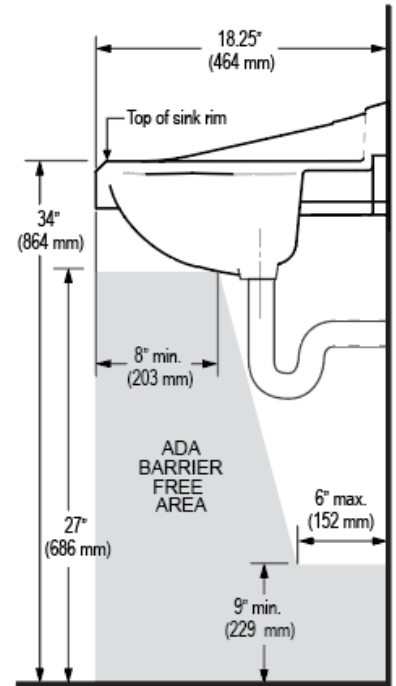
NOTES

All information contained within this document subject to change without notice.

All vitreous china dimensions shown in these drawings are nominal and not to scale. Dimensions can vary within the tolerances established in the governing ASME A112.19.2/CSA B45.1 standard. It is important to consider this when planning rough-in and plumbing layouts.

WARRANTY

[View Warranty Information](#)



Page 2 of 2