

CODE NUMBER

70001402

DESCRIPTION

SU-7009 Urinal and ROYAL 186 SMO Flushometer.

COMPONENTS

- Flushometer: Code 3912654
- Urinal: Code 1107009

DETAILS

- Flush Volume: 0.125 gpf (0.5 Lpf)
- Nominal Dimensions: 14 ¾" x 14 3/16" x 23 ½" (375 x 360 x 597mm)

FLUSHOMETER FEATURES

- "User in View" Flashing LED
- No External Volume Adjustment to Ensure Water Conservation
- Sweat Solder Adapter w/Cover Tube and Cast Wall Flange w/Set Screw
- Stop Seat and Vacuum Breaker molded from PERMEX® Rubber Compound for Chloramine Resistance
- Four (4) Size C Batteries included
- Manual Override Flush Button
- "Low Battery" Flashing LED with Optional Audio Tone
- Optional 24-Hour Sentinel Flush
- ¾" I.P.S. Screwdriver Bak-Chek® Angle Stop with Vandal Resistant Stop Cap

FIXTURE FEATURES

- White Vitreous China
- Washdown flushing action
- Integral flushing rim
- ¾" I.P.S. top spud inlet
- 2" NPT outlet flange
- Vandal resistant strainer assembly included
- All mounting hardware included
- 100% factory flush tested



COMPLIANCES & CERTIFICATIONS



(ADA Compliant, BAA Compliant, BREEAM Water Credit, CalGreen Compliant, CEC Compliant, cUPC Green Certified, EPD, Green Globes Water Credit, HPD, LEED V4 Water Efficiency Credit, Satisfies LEED Credits, WELL Building Standard)

DOWNLOADS

- [Small Spud Urinal Installation Instructions](#)
- [SS/ST/SU/WETS/WEUS Fixtures Repair and Maintenance Guide](#)
- [Additional Downloads](#)

NOTES

All information contained within this document subject to change without notice.

WARRANTY

[View Warranty Information](#)

Technical drawings of the 1000 Series Ball Valve in closed position, showing front and side views with dimensions.

Front View Dimensions:

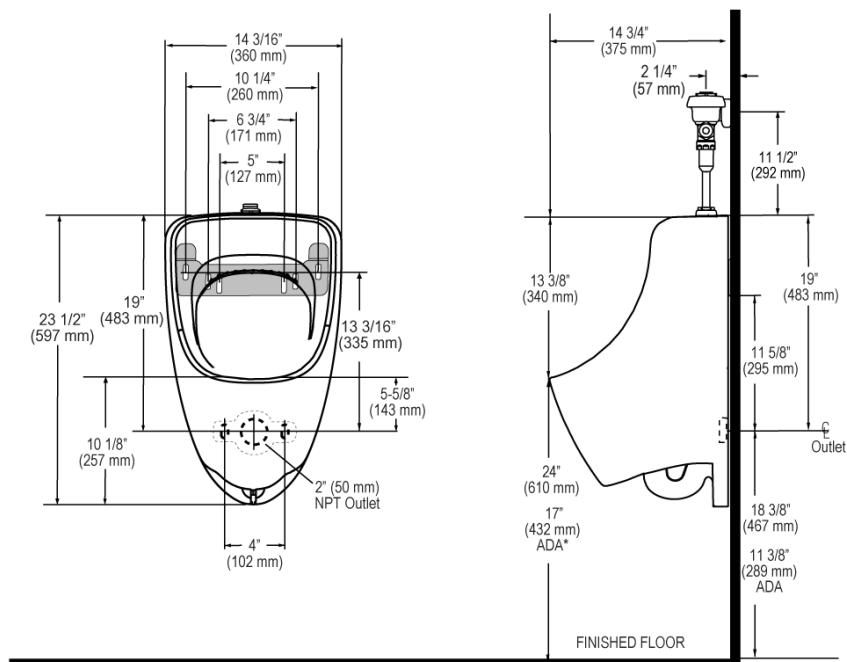
- Top flange diameter: $2\frac{1}{4}"$ MIN. (57 mm)
- Valve body height from C/L of Fixture: $1\frac{1}{2}"$ (38 mm)
- Base diameter: $1\frac{1}{2}"$ (38 mm)

Side View Dimensions:

- Top flange diameter: $5\frac{1}{4}"$ (133 mm)
- Distance from top flange to valve body centerline: $4\frac{3}{4}"$ (121 mm)
- Distance from valve body centerline to handle centerline: $3\frac{1}{4}"$ I.P.S. SUPPLY (DN 20 mm)
- Distance from valve body centerline to base centerline: $11\frac{1}{2}"$ (292 mm)

Labels:

- C/L OF FIXTURE (Center Line of Fixture)
- TOP OF FIXTURE
- C/L OF SUPPLY (Center Line of Supply)



Page 2 of 2