

**DESCRIPTION**

Designer Series™ 3-Station Wall-Mounted Gradient Sink.

**DETAILS**

- Material: Corian or Quartz
- Width: 90" (2,286mm)

**FEATURES**

Three Station Lavatory System with the following features:

- Dimensions: 90" x 22" x 5"
- A monolithic console available in Corian or quartz
- ADA compliant if Installed properly
- Multiple mounting options
- Basins can be sized to project requirements
- Many customization options - see architectural worksheet for all options
- Easy installation
- Pairs great with Sloan faucets and soap dispensers

**COLORS**

- For a complete list of Corian® colors:  
<http://www.corian.com/colors-of-corian-r->
- For a complete list of Corian® quartz colors:  
<https://www.corianquartz.com/colors-of-quartz->

**SUGGESTED FAUCETS**

This sink is compatible with [BASYS® faucets](#).

**VIDEOS**

Sink Configurator

**COMPLIANCES & CERTIFICATIONS**

IGC156

(ADA Compliant, BAA Compliant, cUPC Certified, IGC156)

**RECOMMENDED SPECIFICATION**

Sloan Designer Series Sink model no. DSG 8X000 Gradient Style Sink. Product to be fabricated out of Corian or quartz. Sloan automated sensor faucet. Sloan sensor operated foam soap dispenser. Sink design to be ADA compliant and IAPMO certified. Supplied with angle brackets or enclosure.

**DOWNLOADS**

- [DSG-80000 Installation Instructions](#)
- [Additional Downloads](#)

**NOTES**

All information contained within this document subject to change without notice.

Many customization options - see [architectural worksheet](#) for all options

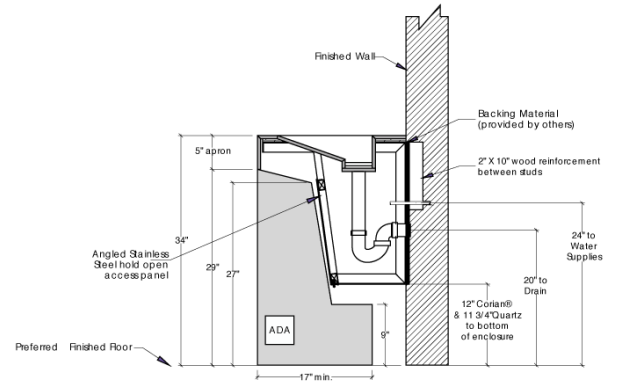
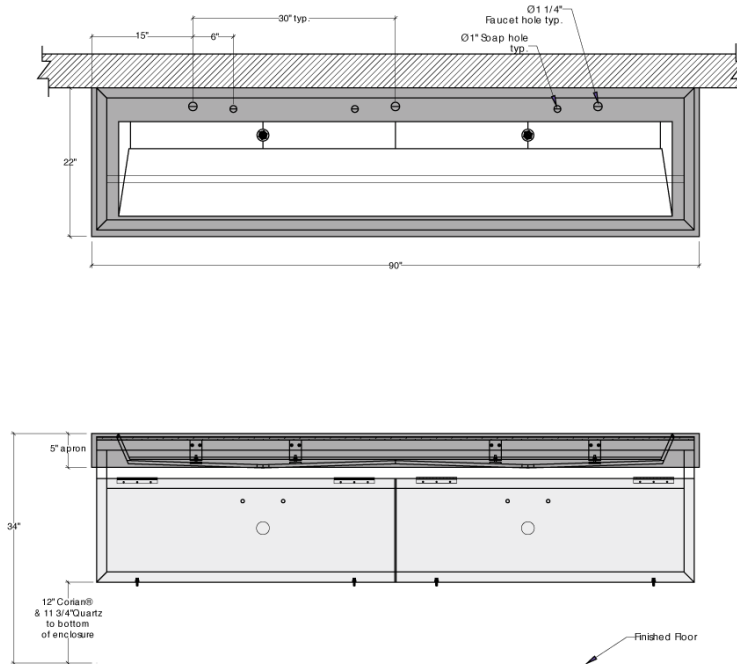
[Find a compatible faucet](#) for this sink.

[Find a matching soap dispenser](#) for this sink.

**WARRANTY**

[View Warranty Information](#)

**ROUGH-IN**



**Sloan 10500 Seymour Ave, Franklin Park, IL 60131**  
Phone: 800.982.5839 • Fax: 800.447.8329 • [sloan.com](http://sloan.com)